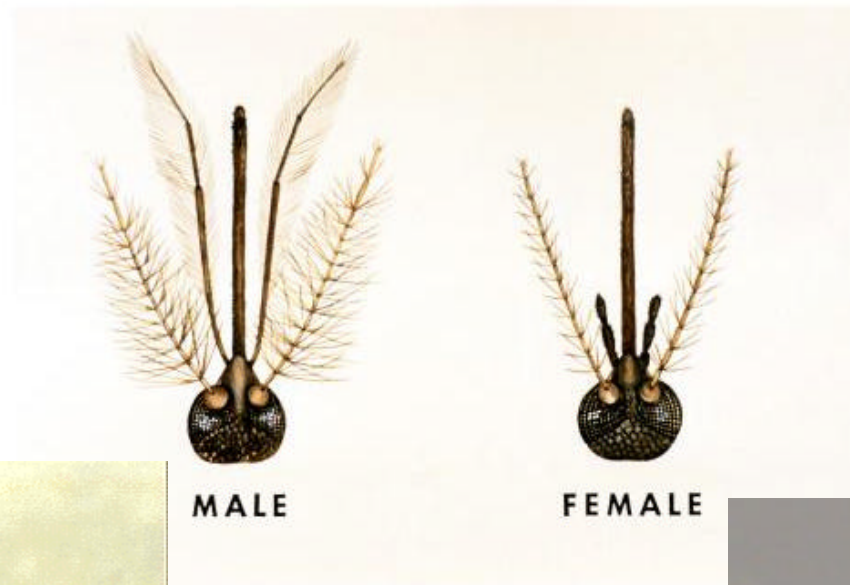
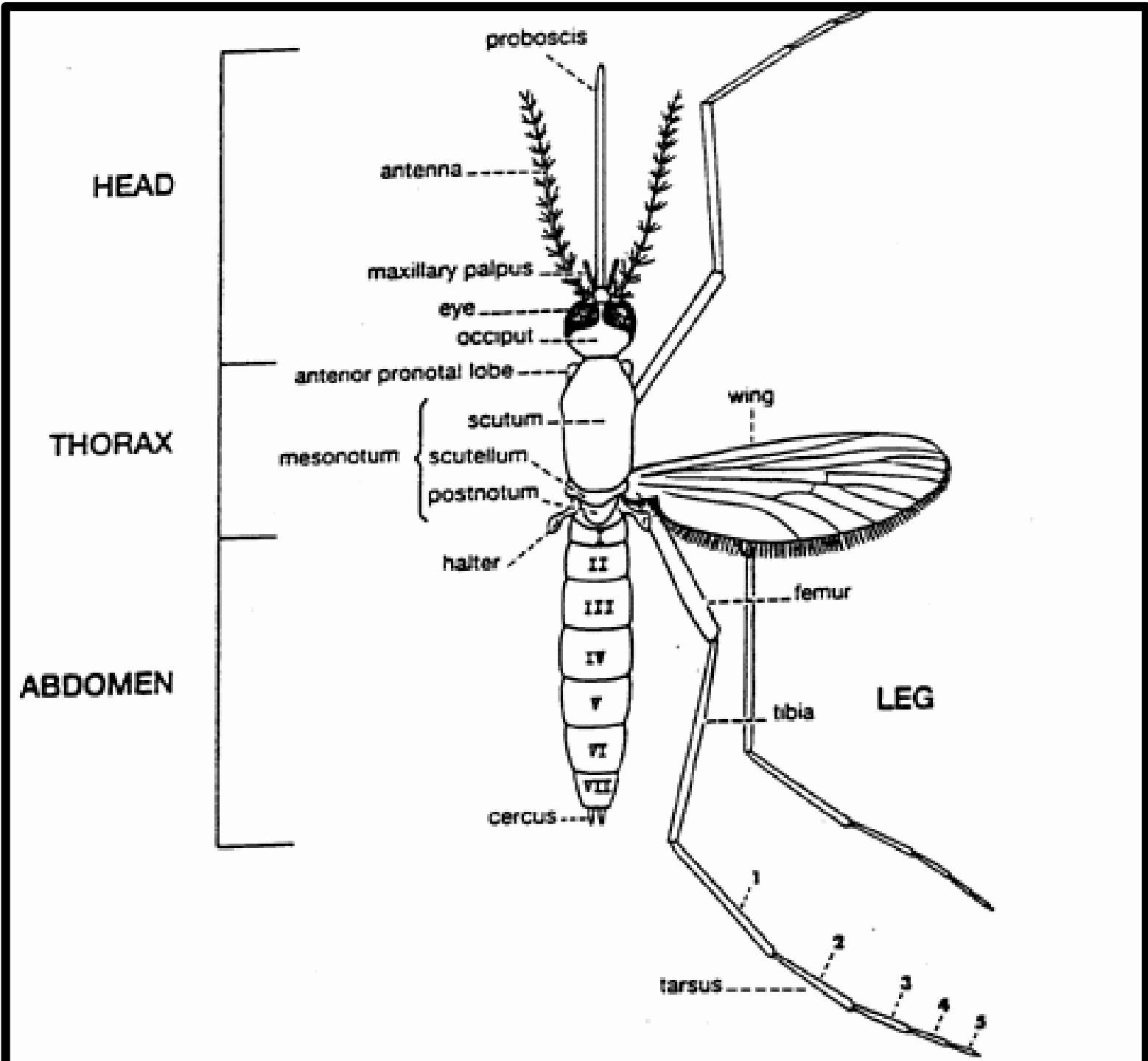


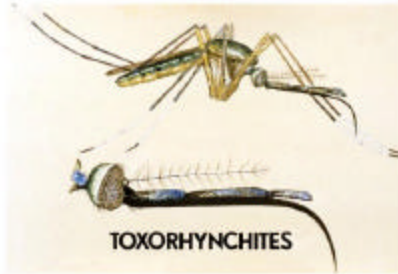
A Simple Key to Some Common Georgia Mosquitoes



This key is for female mosquitoes only. Male mosquitoes can be distinguished from females by their extremely bushy antenna (see pictures). The genitalia at the end of the male abdomen look like ice tongs.







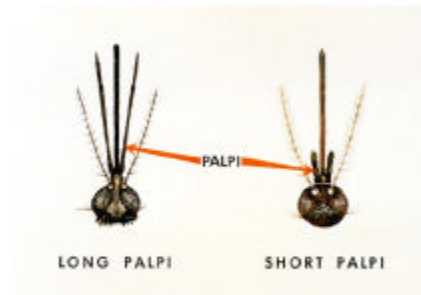
1A. Palpi long & broad; proboscis stout & curved downward_____ *Toxorhynchites* spp

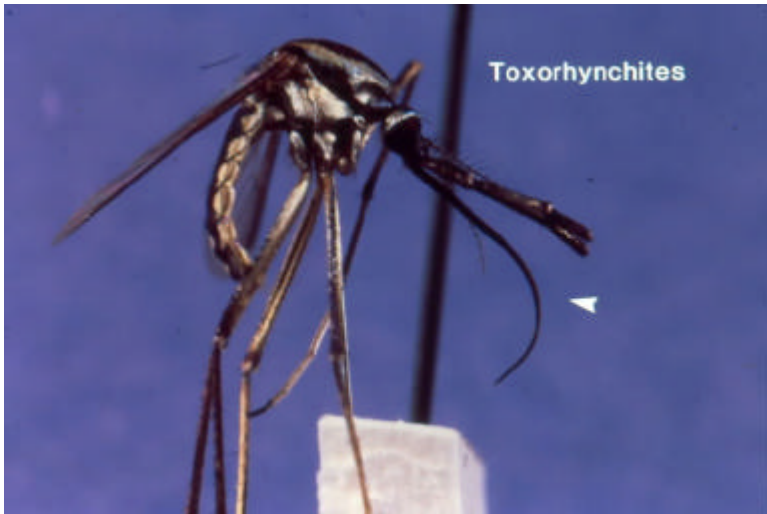
1B. Tuft of hairs on postnotum; top of abdomen dark, bottom white_____ *Wyeomyia* spp

1C. Small mosquito with bluish iridescent scales_____ *Uranotaenia* spp

1D. Palpi as long as proboscis_____ 2

1E. Palpi short_____ 3

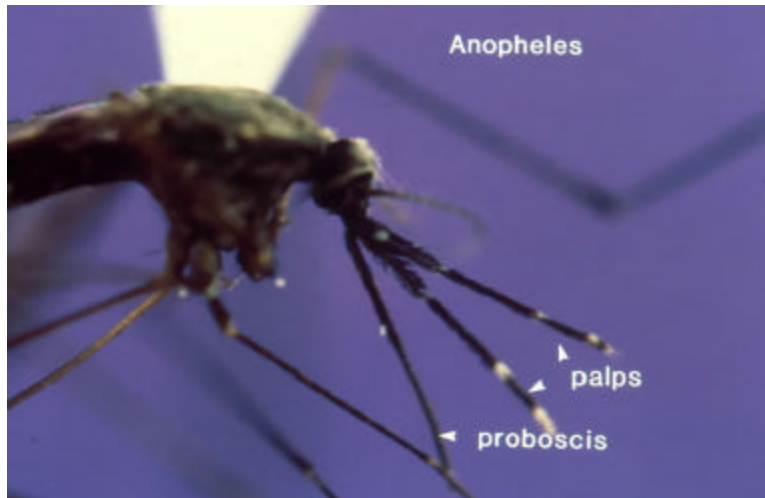




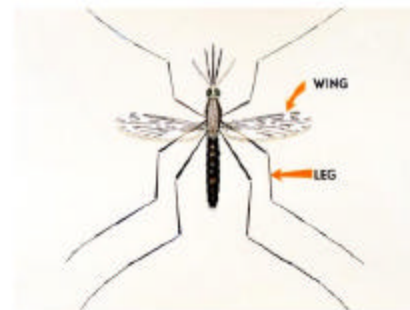
Toxorhynchites spp

Wyeomyia spp

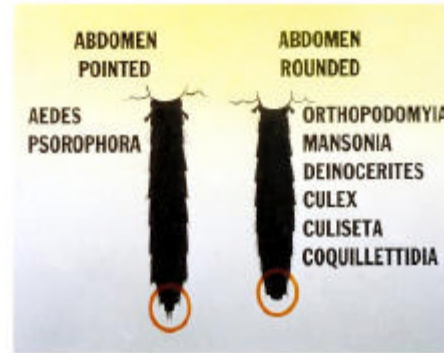
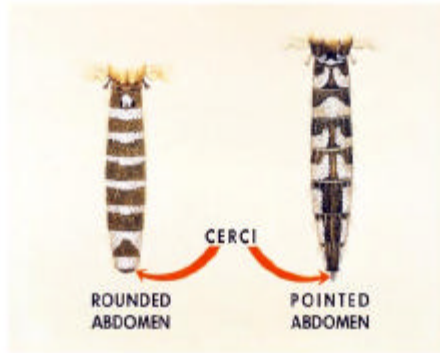




- 2A. Wings with yellow and dark patches, palpi dark at tips _____ *Anopheles punctipennis*
- 2B. Wings with yellow and dark patches, palpi white at tips _____ *Anopheles crucians*
- 2C. Wings with dark patches only; palpi dark at tips _____ *Anopheles quadrimaculatis*
- 2D. None of the above _____ *Anopheles spp*



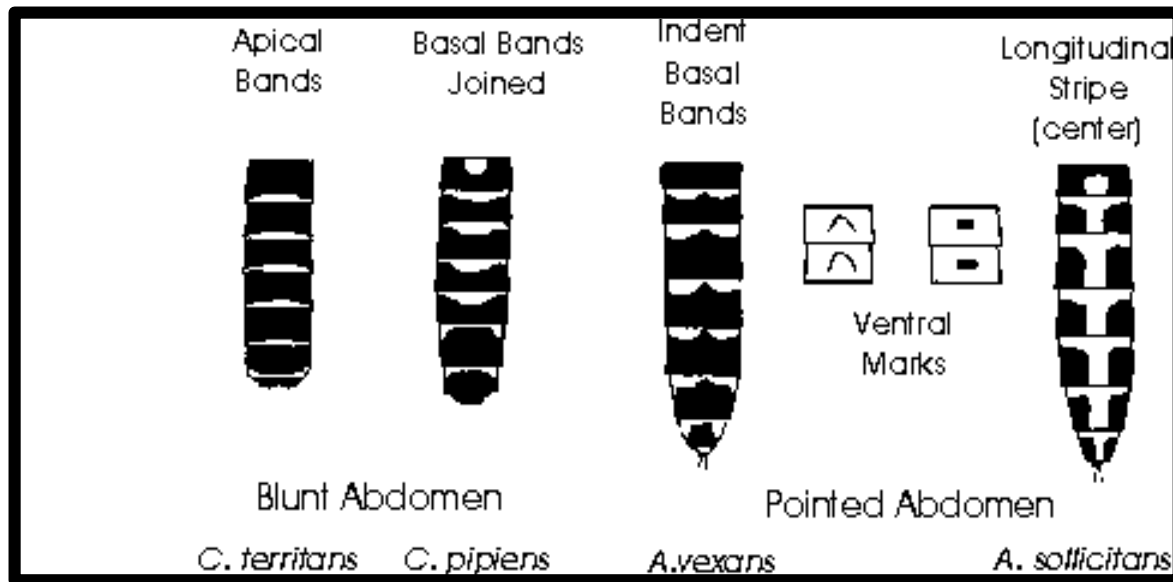
2. *Anopheles* spp.



3A & 3B

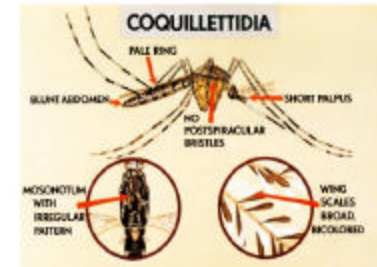
3A. Abdomen bluntly rounded at tip (see pictures)_____4

3B. Abdomen pointed at tip (see pictures)_____5





4A



4C

4A. Delicate lines on scutum; hind tarsi banded across the joints_____ *Orthopodomyia* spp

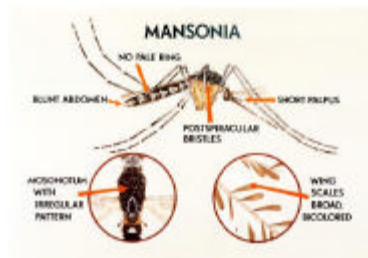
4B. Hind tarsi banded across joints; scutum without lines_____ *Culex coronator*

4C. Proboscis with white band; banding on hind tibia (see pictures)___ *Coquillettida perturbans*

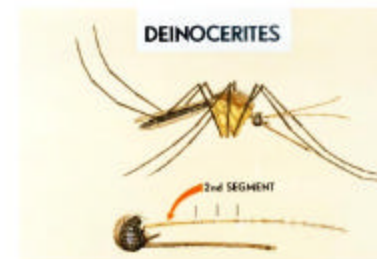
4D. Scales on dorsal surface of wing very broad_____ *Mansonia* spp

4E. Antennae much longer than proboscis_____ *Deinocerites* spp

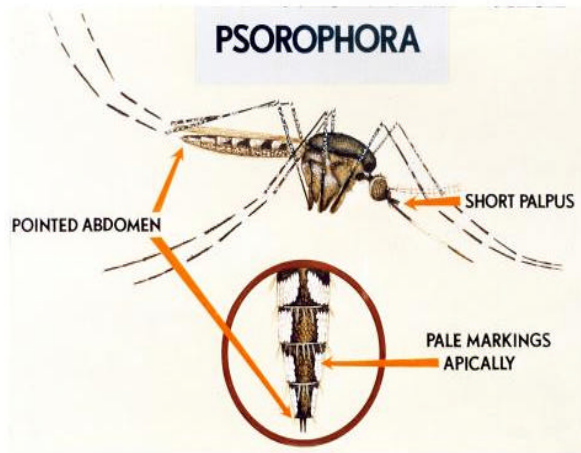
4F. Proboscis & legs without bands; generally dark to light brown in color_____ 6



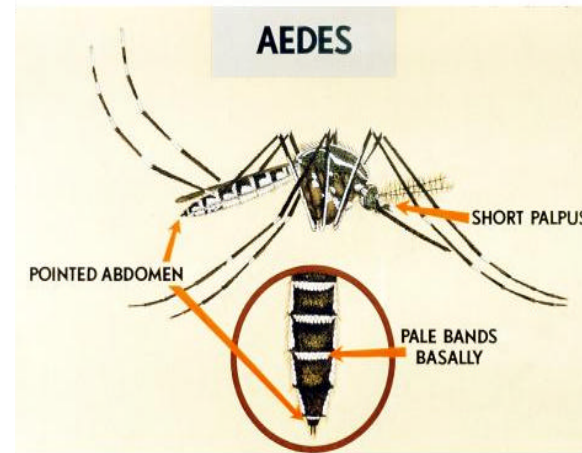
4D



4E



5A. *Psorophora* spp.



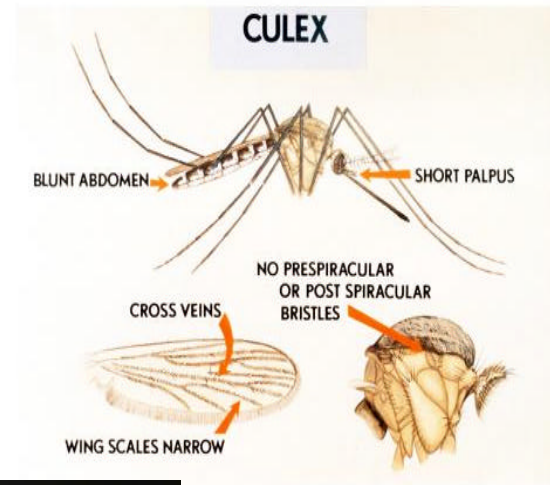
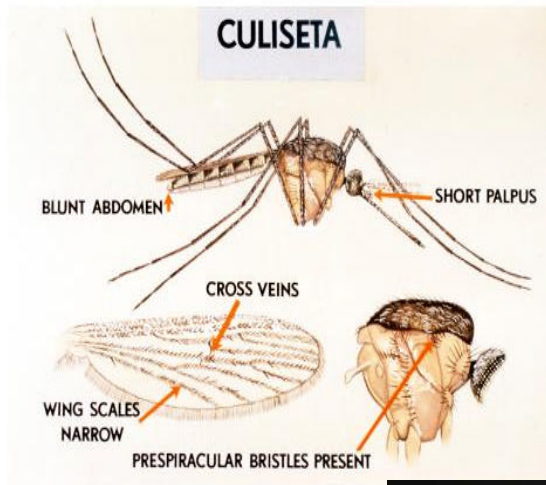
5B. *Aedes* spp
Ochlerotatus spp.

5A. Dorsal segments of abdomen with pale scales apically, or if absent, hind tibia with long, erect scales.....*Psorophora* spp

5B. Dorsal segments with pale scales basally, hind tibia never with long, erect scales.....*Aedes* or *Ochlerotatus* spp

6A. Row of bristles on underside of wing near body; wing with cross-vein nearly in a line, prespiracular bristles present; proboscis long and thin.....*Culiseta* spp

6B. No bristles on underside of wing; no spiracular bristles; wings with cross-vein separated by their own length.....*Culex* spp



6A



6B



***Psorophora* spp**

- 1A. Salt & pepper wing pattern; narrow, pale subapical band on hindleg.....2
- 1B. Wings mostly dark; no subapical band on hindleg.....3

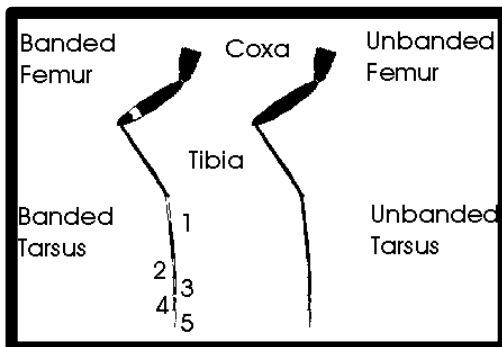
- 2A. Hindlegs with pale bands.....*Ps columbiae*
- 2B. Hindlegs mostly pale; wings with definite pattern.....*Ps discolor*

- 3A. Long, erect scales on hindleg; last segment of leg is not entirely white.....4
- 3B. No long, erect scales on hindleg, or if scales are long, end of leg is entirely white.....5

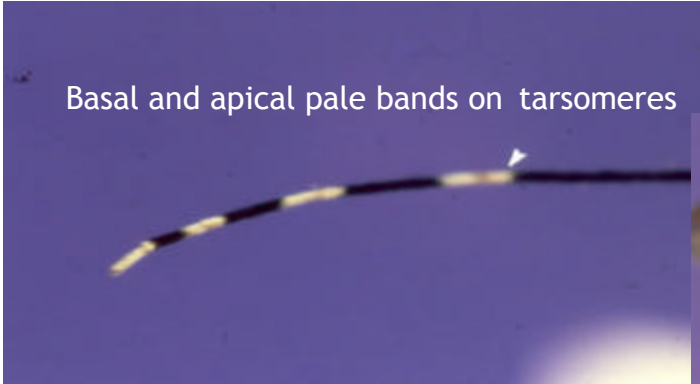
- 4A. Very long leg scales; stripe of narrow golden scales down middle of the scutum; proboscis yellow-scaled.....*Ps ciliata*
- 4B. Proboscis dark-scaled; middle of scutum dark scaled.....*Ps howardii*

- 5A. Hindlegs dark; dorsal patches of golden scales on abdomen.....*Ps cyanescens*
- 5B. Hindlegs with some pale scales.....6

- 6A. Only the 2nd-last hindleg segment (hindtarsomere 4) is white; other segments are dark.....*Ps mathesoni*
- 6B. Two or three segments at end of hindleg are white.....7



- 7A. No pattern on scutum.....*Ps ferox*
- 7B. Sides of scutum pale scaled.....*Ps horrida*



- Aedes* or *Ochlerotatus* spp**
- 1A. Hindlegs with pale bands.....2
 - 1B. Hindlegs with no bands.....3
 - 2A. Bands on hindlegs at top of segment.....4
 - 2B. Bands on hindlegs cross joint.....5
 - 3A. Silvery-white scales on sides of thorax; end of abdomen compressed laterally (like a flea)
.....*Oc. triseriatus* (LAC vector)
 - 3B. End of abdomen not flattened.....*Ochlerotatus* spp
 - 4A. Proboscis with white band.....saltmarsh *Ochlerotatus* spp
 - 4B. Proboscis with no white band.....6
 - 5A. Hindlegs with broad bands across the joints; last leg segment pale; thorax golden brown
.....*Oc canadensis*
 - 5B. Hindlegs with narrow bands across joints, last leg segment dark.....*Ochlerotatus* spp
 - 6A. Scutum with single narrow strip of white scale; white stripe down back of head, ends of palps white;
broad bands on hind legs.....*Ae albopictus*
 - 6B. Narrow stripe on hind legs; B-shaped pale bands on abdomen.....*Ae vexans*



Culex nigripalpus:

- Abdomen and legs very dark
- Narrow bands on sides of the last few segments of the abdomen

Culex erraticus:

- Several rows of broad flat scales on head behind eyes
- Sides of thorax very dark brown
- End of abdomen generally squared
- Small mosquito



Culex quinquefasciatus:

1. Light-brown color
2. Coarse scales on thorax
3. Pale bands on abdomen are half-moon shape

Culex restuans:

- Somewhat reddish-brown in color
- Smaller, smoother scales on thorax
- Pale bands on abdomen narrow and straight
- Two small pale dots on scutum



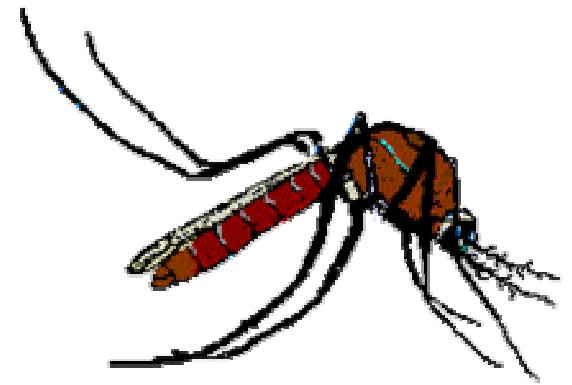
Culex salinarius:

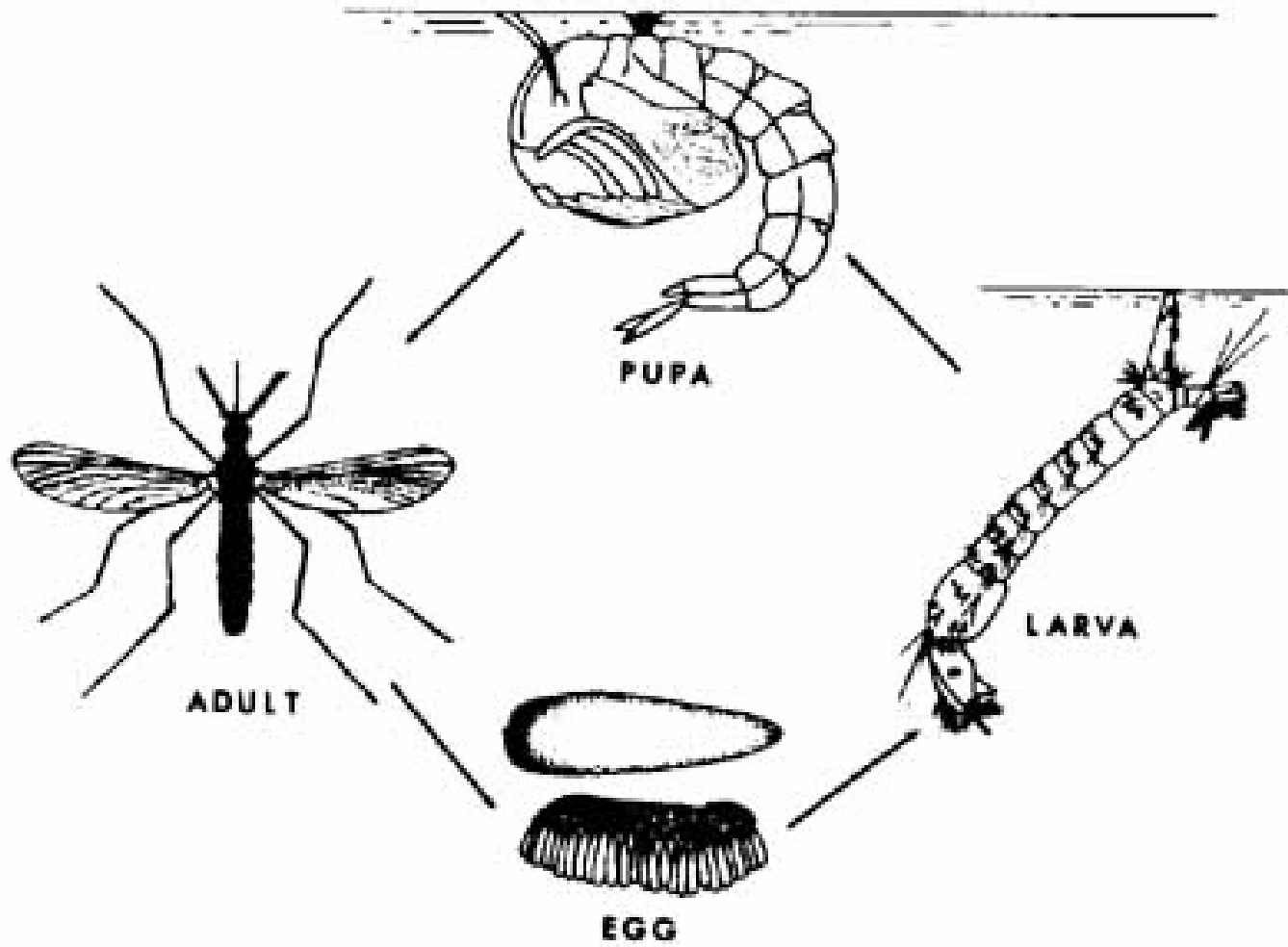
- Somewhat yellowish in color
- Very narrow pale bands on abdomen
- Last one or two segments of abdomen yellowish-white





Mosquito Surveillance





<https://dph.georgia.gov/EnvironmentalHealth>

