

Working with the New Landowner of Little Saint Simons Island

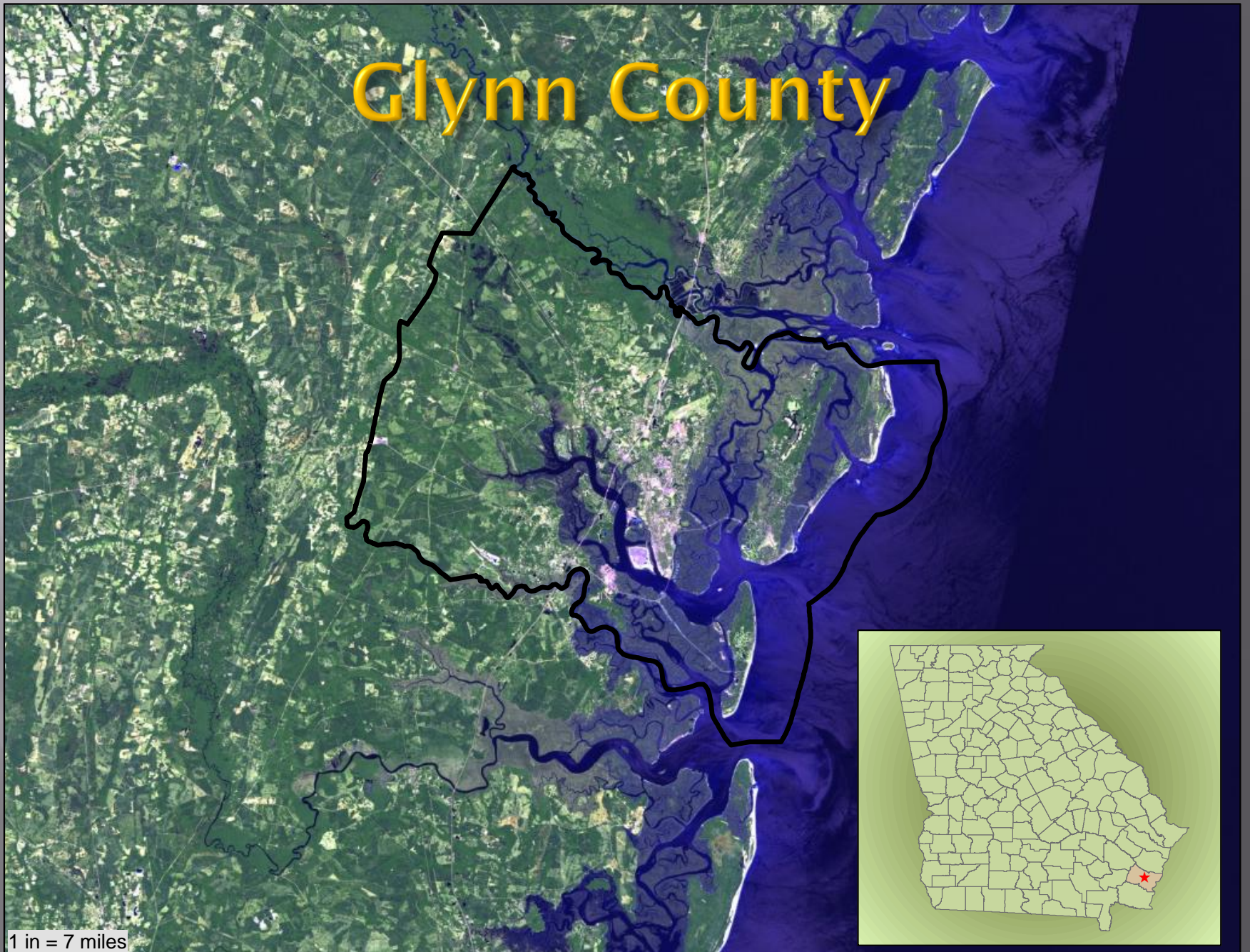
▣ By Ben Brewer-Manager, Glynn County
Mosquito Control



Working with the New Landowner of Little Saint Simons Island

- ▣ Background
- ▣ Who owns it now? Who manages it?
- ▣ Past relationship with Landowners
- ▣ How I am working with the landowner

Glynn County

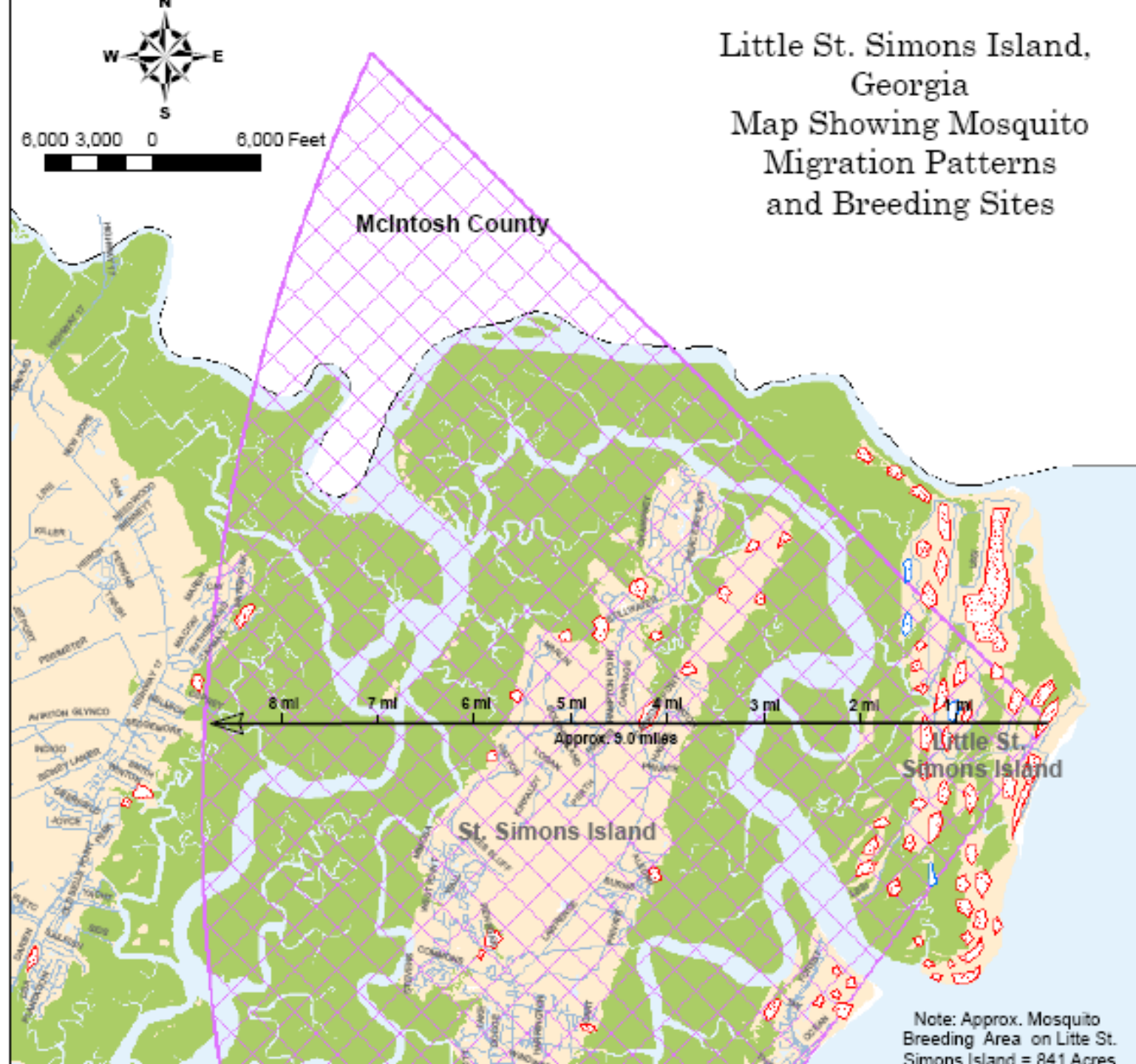


Migration patterns

October 08

April 09

August 09



The New Owner



Source Reduction--Ditches















2009/ 4/10

W:081 12° 19.99"
N:031 15° 27.12"

Past strategies

- ▣ Spray adults as needed
- ▣ They had our ULV spray machine on their island
- ▣ Deliver handheld fogger for special events
- ▣ Just fly over whenever we felt the need to inspect for larvae-Larvicide at will.
- ▣ Was treated like everywhere else in the county

ECOLOGICAL ADVISORY COUNCIL

“darlings of the cream of the crop in the
world of environmental conservation”

Doing nothing is better than risking doing
something wrong

Eco Tourism Resort

Ranked #1 destination in
Continental United
States as an eco-Tourism
resort



Issues the Council will address

Mosquito Adulticide

Horses off the Island

Hogs trapped

Raccoons killed

250 deer last year to be
killed

Birds nesting on the beach

Organic garden

They do not see these
large amounts of
mosquitoes as being bad
for the environment



The First Meeting

- ▣ Hello
- ▣ We want to hydrate the Sanchopan Marsh
- ▣ We just think it will work. No hydrologic data.
- ▣ No there aren't detailed records of mosquito breeding.
- ▣ "Proof" mosquitoes migrate from LSSI to the other areas
- ▣ By the way could you sign this form (by the end of the month) giving us your permission to do source reduction with whatever techniques that we choose so that we can receive a Coastal Incentive Grant?
- ▣ What's a King's Grant?
- ▣ **Lesson Learned- Don't meet the people in charge and ask for something big during the first meeting**

The Letter

▣ 3/31/09

▣ No more
adulticide

New strategy

- ▣ Why larvacide if I'm not going to afford larvaciding the whole island and we still will probably need to spray anyway
- ▣ Migration destinations will be adulticided
- ▣ Watch breeding closely and document all occurrences and see whether the adults travel to other areas.



2009/ 4/10

W:081 18° 07.30"
N:031 13° 04.29"



2009 / 4 / 10

W: 081 16° 42.27"
N: 081 15° 00.80"

Not mosquito Control-Now only mosquito surveillance

- ▣ LSSI staff larvicide for me
- ▣ Meet with the individuals on the council
- ▣ Follow their advice
- ▣ Explore the island and take note of human impacts on the marsh hydrology
- ▣ Act Happy to be there



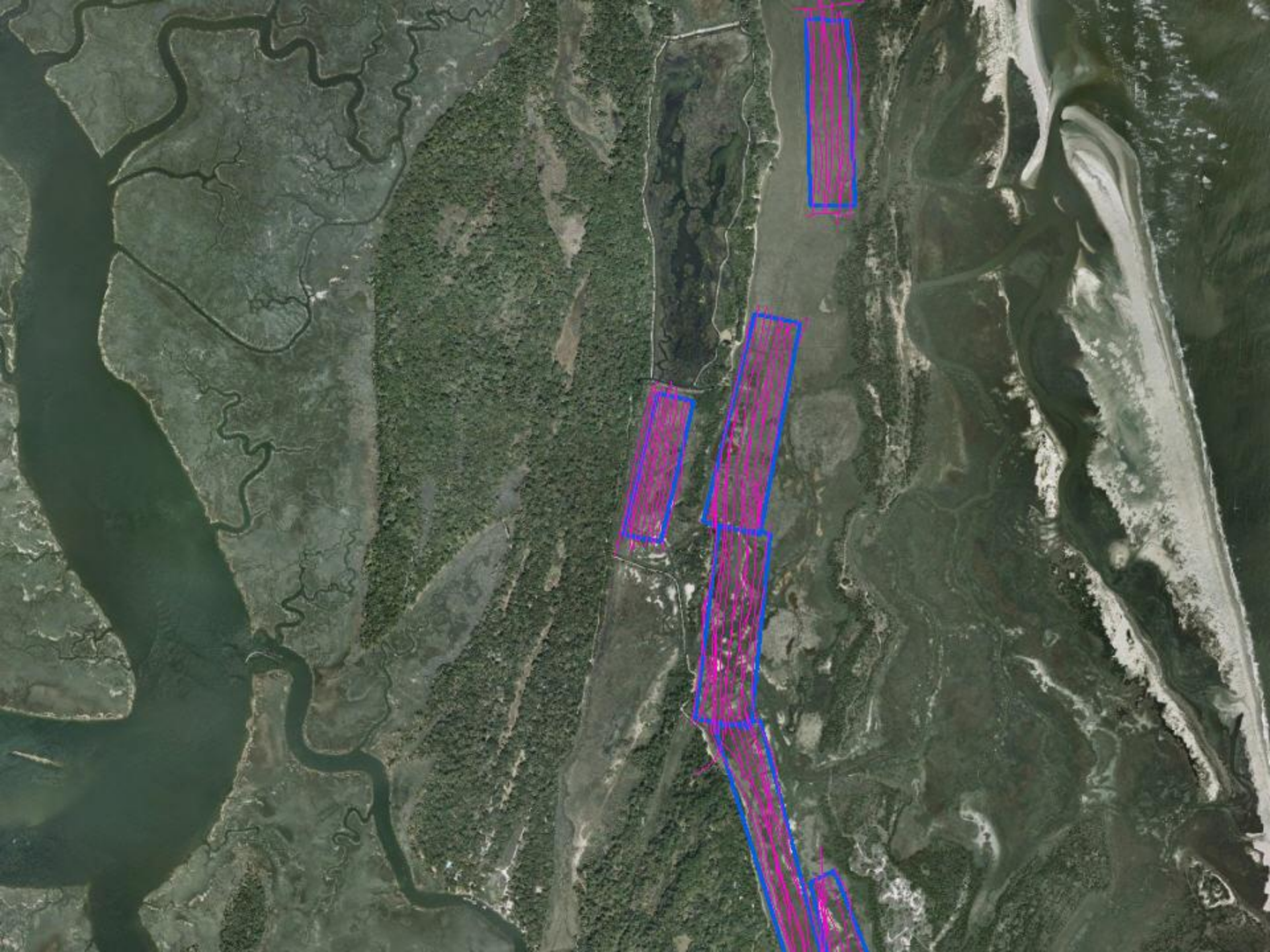
The garden Has been flooded

- ▣ June 24, 2009-Scott calls
- ▣ I fly over in helicopter and find widespread breeding
- ▣ I stayed overnight and took photographs and videoed high tide.
- ▣ June 25, 2009
- ▣ The next day I walk the marshes and decide to just larvacide certain areas. Create polygons-aerial
- ▣ June 26, 2009 Altosid SBG-Helicopter Application-120 acres
- ▣ **\$10,593**



6/26/09 Sanchopan Breeding





Monitoring Route











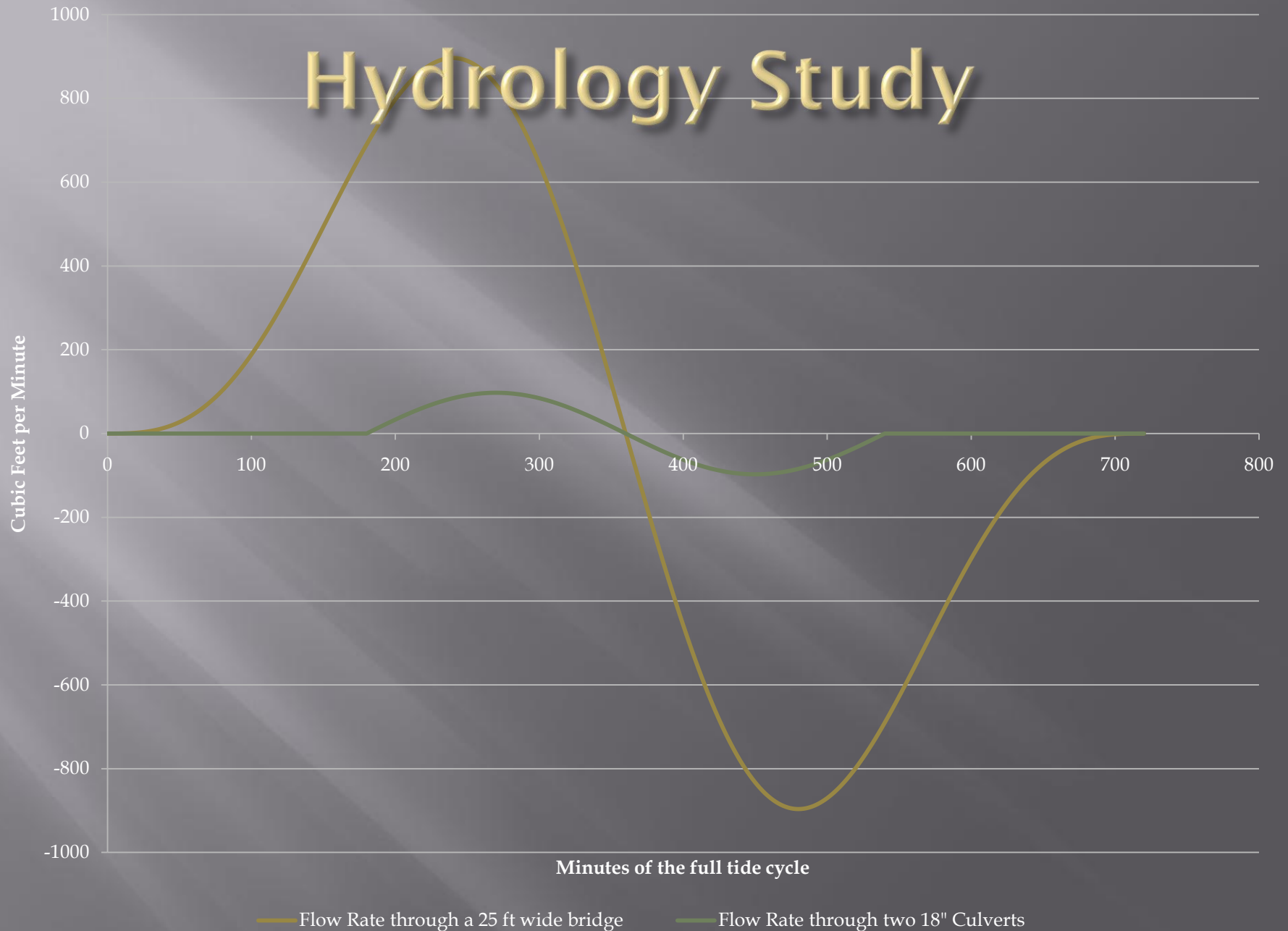








Hydrology Study



Individual Council Visits

