



STELLAR

The word "STELLAR" is displayed in a bold, sans-serif font. The letters "S" and "AR" are blue, while "TELL" is white with a blue outline. The text is centered horizontally and partially overlaid by a large, stylized sunburst graphic. The sunburst is orange with a yellow-to-white gradient in the center, creating a bright, glowing effect. The background is a dark blue gradient with faint, diagonal light rays emanating from the top left.

What is STELLAR ?

What is STELLAR ?

What can STELLAR
help you?

STELLAR is a simple tracking and reporting solution for your working platform.

STELLAR can be easily install on;

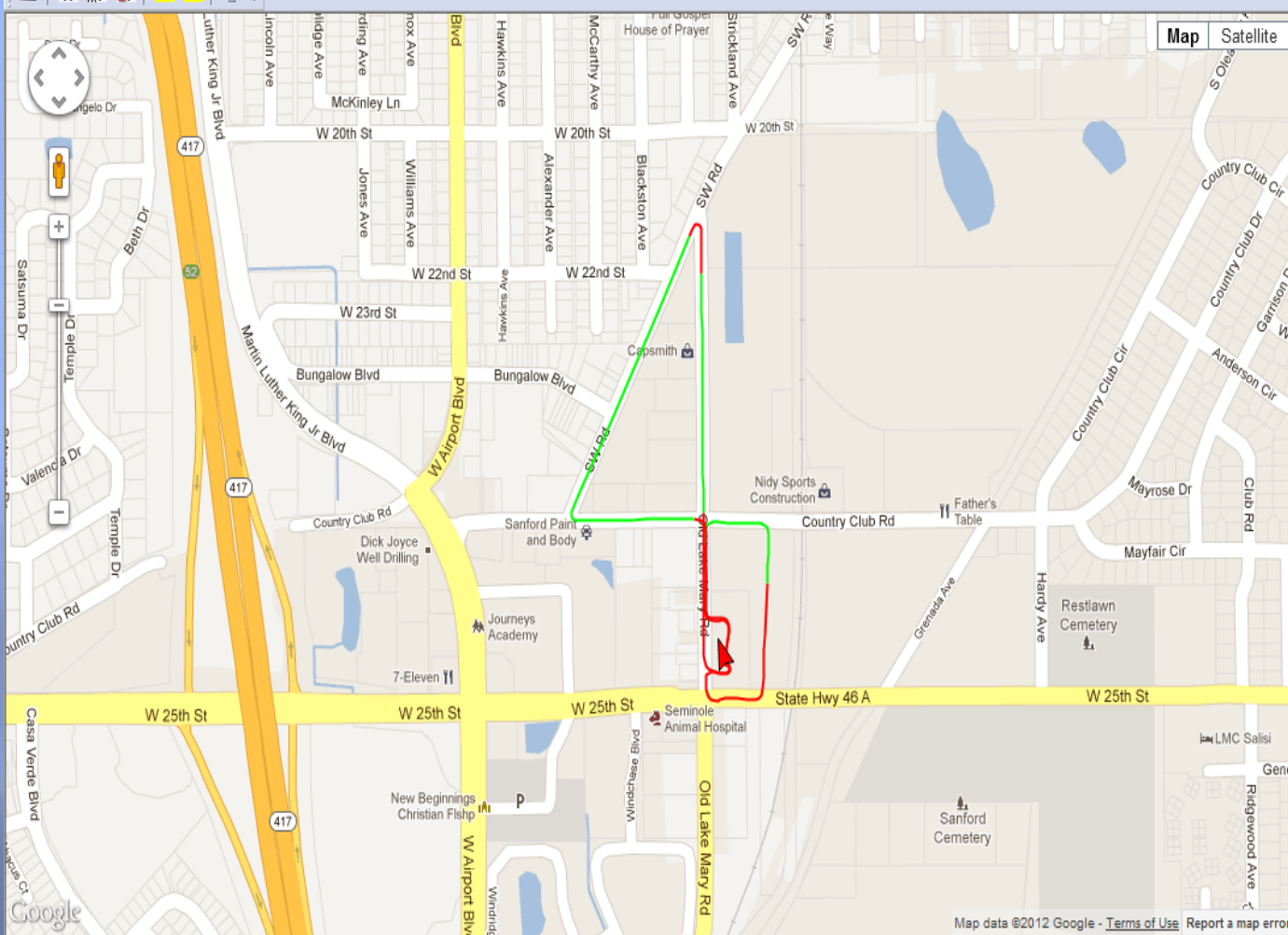
- ❖ Fixed Flow ULV
- ❖ Variable Flow ULV
- ❖ ATV for Mosquito Control
- ❖ Air Boat for Mosquito Control
- ❖ Air Boat Aquatic and Weed control

The included GPS receiver is completely waterproof and includes an active patch antenna for highest level of accuracy.

The STELLAR module includes internal storage so you can either download the data manually to a provided USB flash drive or STELLAR can download the data directly to the STELLAR software via the optional WiFi.

STELLAR software uses the internet to provide Google Maps as a background to display track data. You also have the option to view the background in satellite view mode.

NO maps to update as all maps are provided by Google Maps.



Map Satellite

MCES_17 2012-09-20

Trip Type	ULV
Region	0
Start	2012-09-20 12:21:36
End	2012-09-20 12:51:32
Driver	CAG
Truck	MCES_17
Product	WATER
TVS	9.5 oz
Mins Sprayed	1.9mins
Time Traveled	04min 57sec
Flow Rate	5.0 oz/min
Avg Speed	17.2 mph
Max Speed	35.0 mph
Avg Spray Speed	23.2 mph
Max Spray Speed	35.0 mph
Distance Treated	0.7 miles
Area Treated	26.7 acres

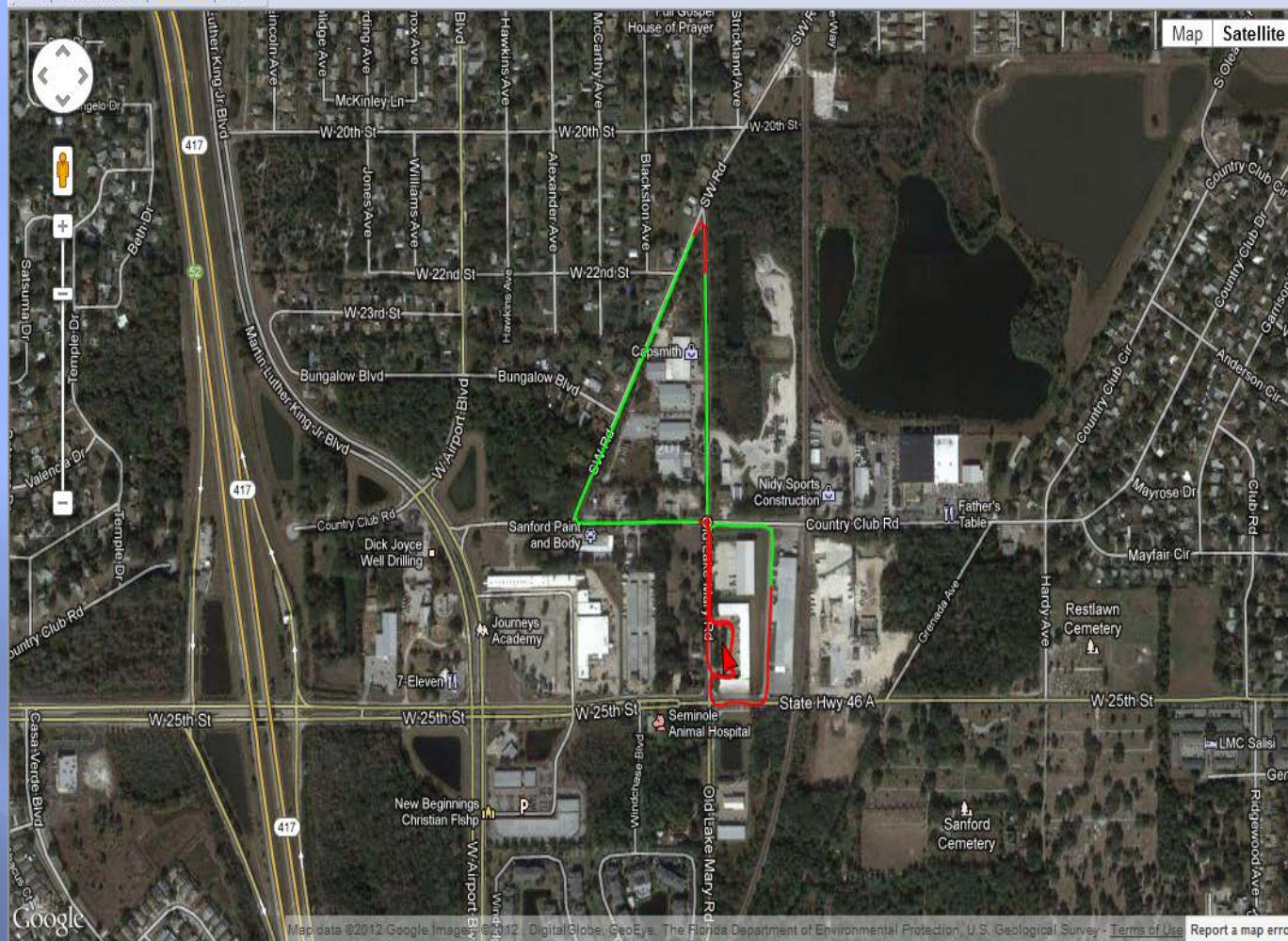
Truck Data

Time	12:21:36
Speed	3.0 mph
Track	337.0
Spray	OFF

Latitude:	28.79293
-----------	----------

Longitude:	-81.38175
------------	-----------

Map data ©2012 Google - [Terms of Use](#) [Report a map error](#)



MCES_17 2012-09-20

Trip Type	ULV
Region	0
Start	2012-09-20 12:21:36
End	2012-09-20 12:51:32
Driver	CAG
Truck	MCES_17
Product	WATER
TVS	9.5 oz
Mins Sprayed	1.9mins
Time Traveled	04min 57sec
Flow Rate	5.0 oz/min
Avg Speed	17.2 mph
Max Speed	35.0 mph
Avg Spray Speed	23.2 mph
Max Spray Speed	35.0 mph
Distance Treated	0.7 miles
Area Treated	26.7 acres

Truck Data	
Time	12:21:36
Speed	3.0 mph
Track	337.0
Spray	OFF

Latitude:	28.79246
Longitude:	-81.29736



In the software you have the option to toggle RED and GREEN to show spray ON or OFF

You have the option to configure the vehicle for either ULV or Larvicide.

Flow totals are calculated from flow amount and time on.

STELLAR reports

DATA formats available in the software include;

- ❖ Simple text file summarizing data for printing.
- ❖ XML file for MS Excel or other databases.
- ❖ KML for viewing the track in Google Earth.
- ❖ Shape files for viewing in ESRI software products such as ArcView.

the STELLAR reports include;

- ❖ Area ID
- ❖ Start Time
- ❖ End Time
- ❖ Driver Name or ID
- ❖ Vehicle ID
- ❖ Product Name or ID
- ❖ Total Volume Used
- ❖ Minutes Sprayed
- ❖ Total Time Traveled
- ❖ Flow Rate
- ❖ Average Speed
- ❖ Max Speed
- ❖ Average Spray Speed
- ❖ Max Spray Speed
- ❖ Distance Traveled
- ❖ Area Treated

STELLAR can;

- ❖ Record the vehicle's location, know the vehicle speed, time and location once every second.
- ❖ View the track in the STELLAR software, ESRI, or Google Earth.
- ❖ Provide data in multiple formats for integration into your already established database.
- ❖ Compile and summarize data by area, driver, chemical, vehicle or date.
- ❖ Know how much was sprayed and where.
- ❖ Print out maps with track showing spray ON and OFF.

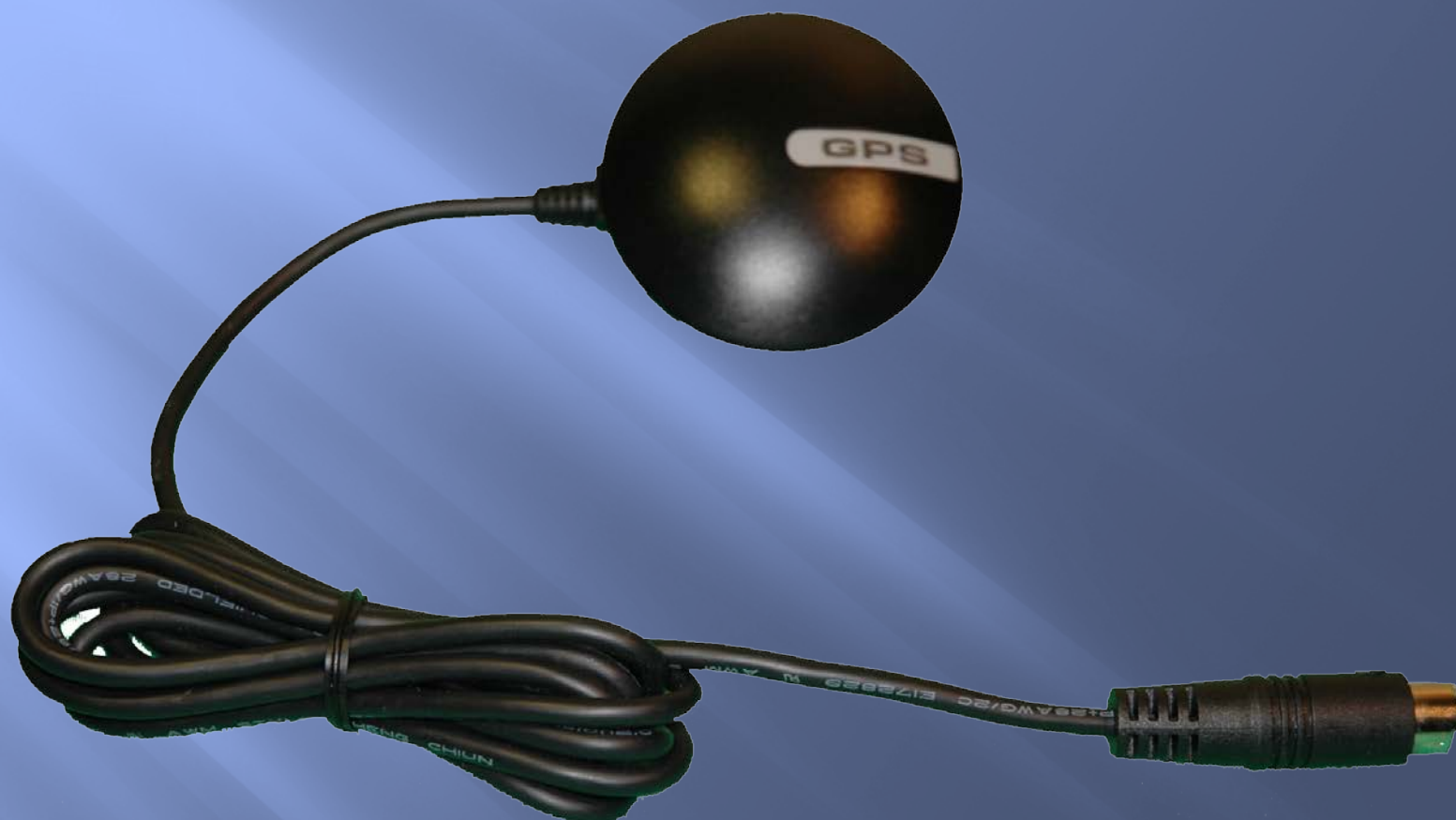


● POWER

● GPS

● STATUS

MCES, LLC



Any simple questions ?

THANK YOU