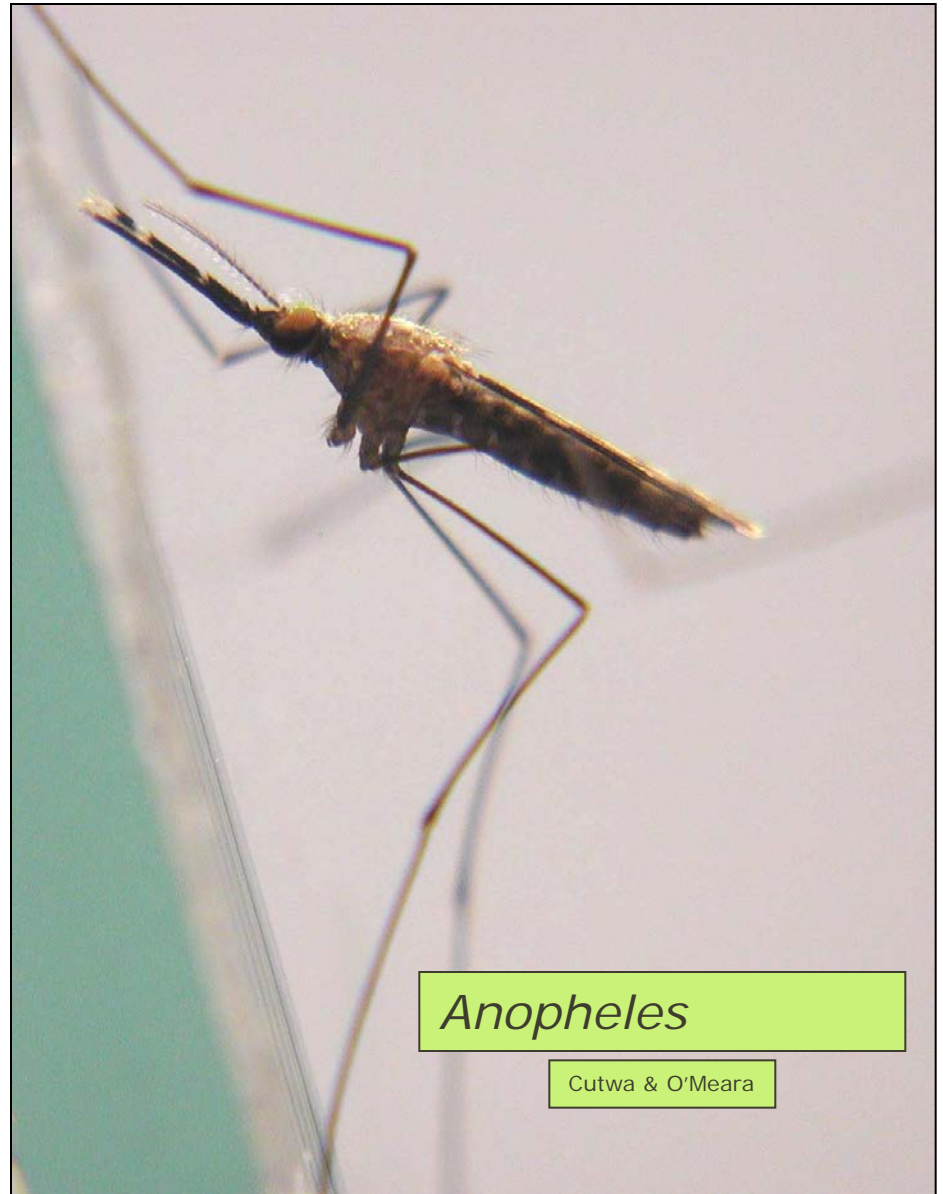




Commercial Mosquito Control
From the PMP Perspective
Larry Motes, B.C.E.
Gregory Pest Solutions

Disease Transmission

- Malaria
- West Nile Virus
- EEE
- Dengue
- Heartworm
- Yellow Fever



Anopheles

Cutwa & O'Meara

Nuisance Pest





Growing Part of Industry



Have you heard the buzz?

With Gregory Pest Solutions . . .

Mosquito Season Ends **NOW!**

Is there a more dreaded sound than the "buzzing" of predatory mosquitoes? Outdoors and indoors, they ruin your family's enjoyment of the season.

Protect your family, and your pets, from painful (and potentially disease-carrying) mosquito bites. Call Gregory Pest at (843) 875-9013 today for the solution to your mosquito problems!

SAVE 10%

on Mosquito Control Service!

With our new "Go Green PLUS" program, current Gregory customers get an automatic 10% discount on every additional service! Please call (843) 875-9013 to save 10%!

Our monthly program uses proven control agents to kill adult mosquitoes and prevent larval mosquitoes from breeding. We even offer an all-natural alternative that uses only organic materials. Either way, now through October you can be free of mosquitoes, with *guaranteed* Gregory service!

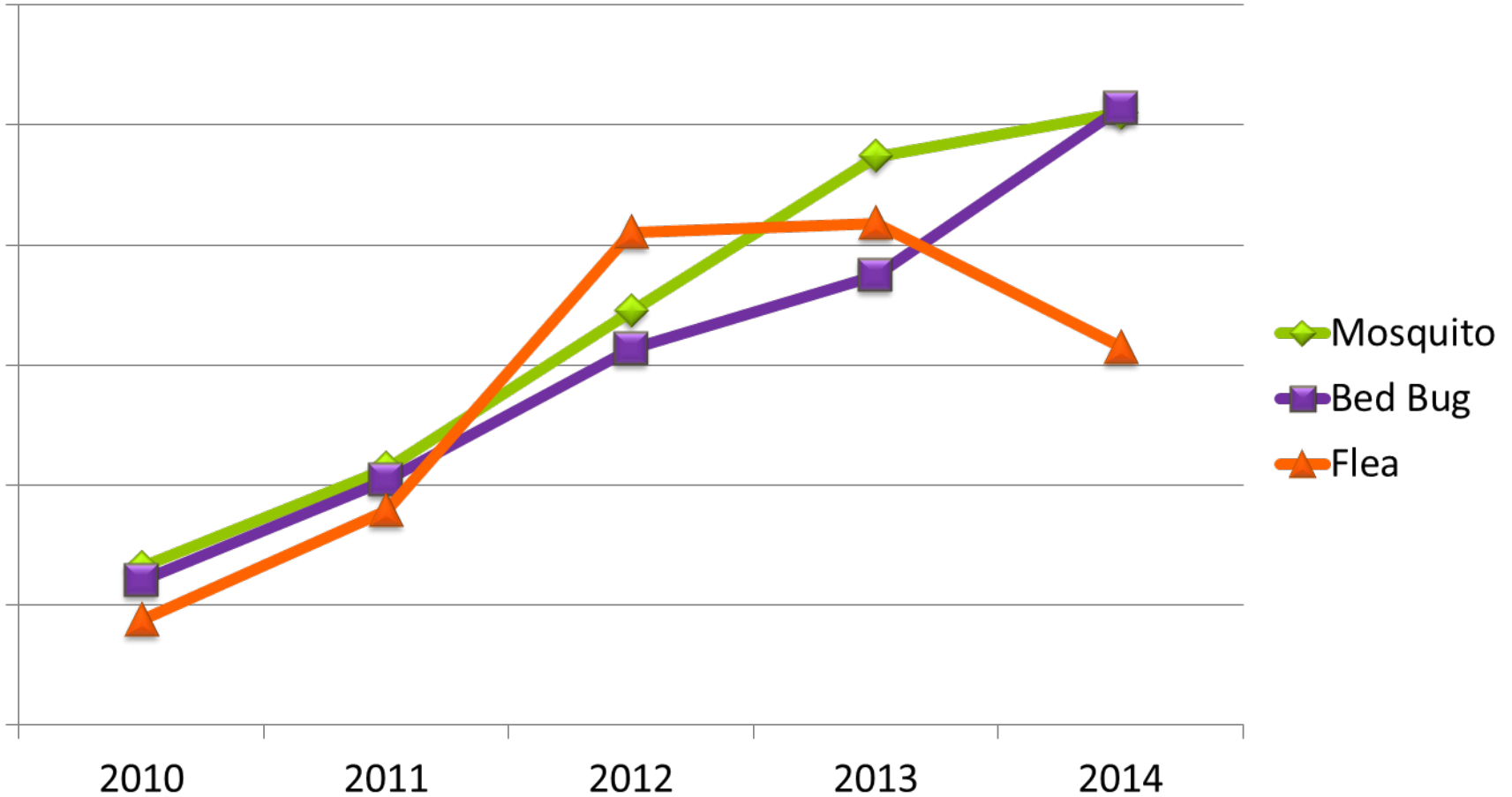


Gregory Pest Solutions

(843) 875-9013

GregoryGoGreen.com

Blood Sucking Arthropod Trending by Type



Forrest and Saturn Bed Bug Canines

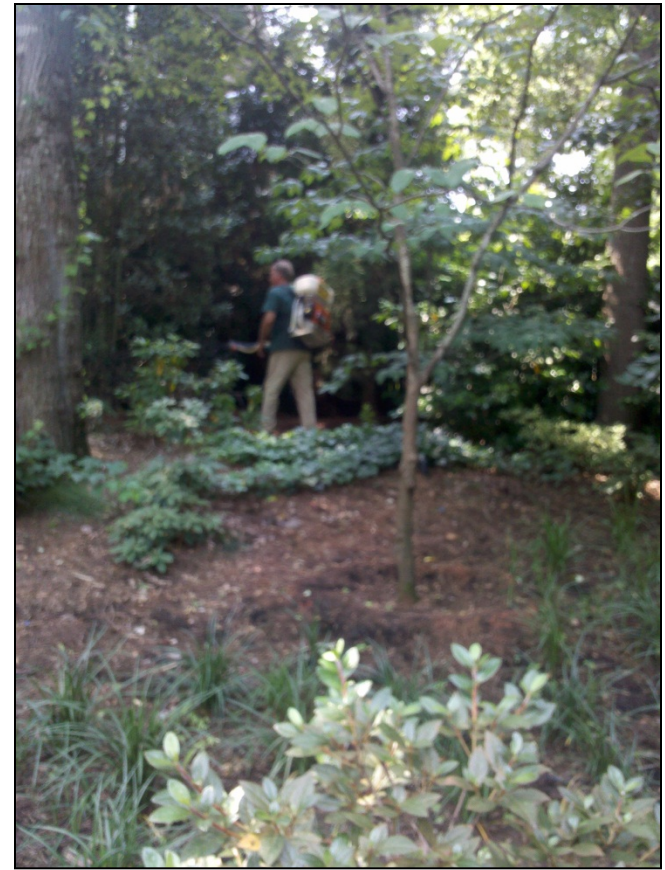




Where do we treat?



- Towns and Cities
- Golf Courses
- Universities
- Sporting Events
 - Football
 - Softball
 - Tennis
 - Soccer
- Homeowner Associations
- Gated Communities
- Residential





- **Larvicides to breeding sites**
- **Barrier Spray on 7 month contract!**
- **ULV application for immediate relief**
- **Aquatic Plant control in ponds,
Retention runoffs, and other areas of
standing water with vegetation**

Discarded Tires



Catch Basins



Barrier Applications



Applications with Mist Blower

- Do not apply to flowering plants
 - Edible fruits
 - Honeybees foraging
- Under Decks
- Vegetation up to 8' high
- Safe for Children and Pets after it dries
- 1 ounce Bifenthrin per 1000 square feet

ULV Applications

- London Fog XKE
 - Guardian 55
- ❖ Large Industrial Warehouses



Who Benefits?





The End

