



Larry Motes, BCE  
Director of Operations  
Gregory Pest Solutions

Gregory Pest was founded in 1972 in Greenville, SC by Phil and Sara Gregory

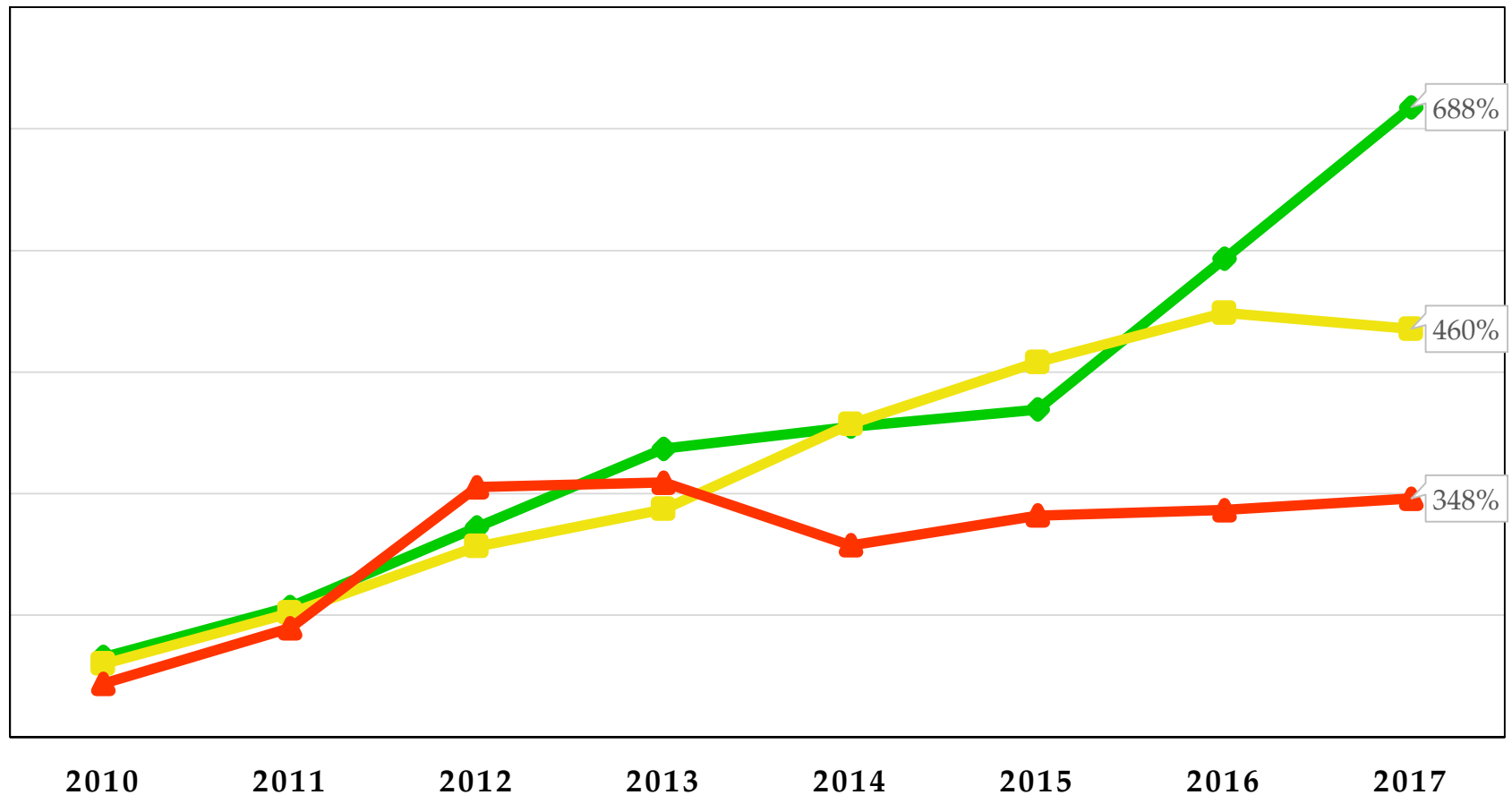
Privately held, no franchises with 8 District Offices across 12 States

We currently have 258 full time employees and are known for our bright green vehicles!



# Blood Sucking Arthropod Trending by Type

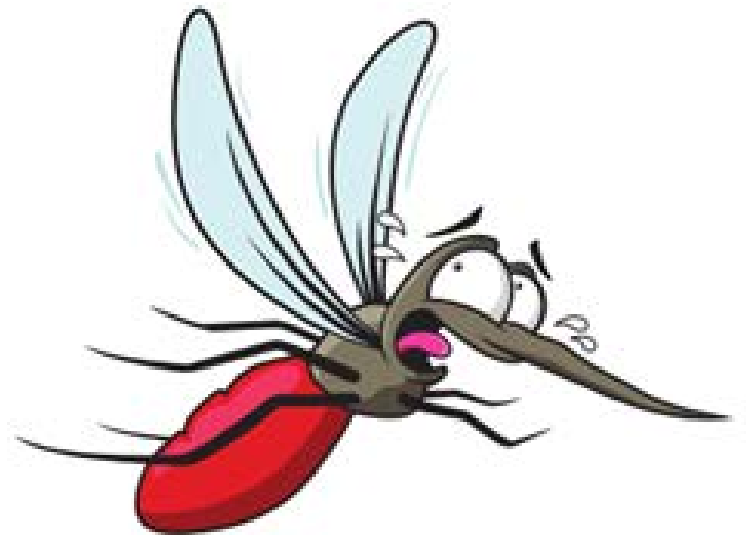
Mosquito Bed Bug Flea

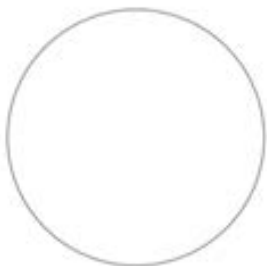




# “No Fear” Marketing

NO FEAR.  
**Gregory**  
IS HERE.





## MOSQUITO PREVENTION TIPS FROM

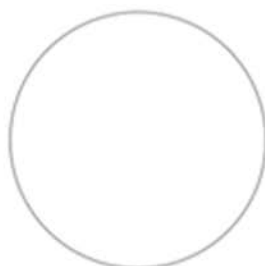


### PREVENTION:

- Dispose of old tires, buckets, aluminum cans, plastic sheeting, or other refuse that can hold water. Empty accumulated water from trash cans, boats, wheel barrows, pet dishes, and flower pot bottoms. If possible, turn these over when they are not in use.
- Clean debris from rain gutters and unclog obstructed downspouts. Remove any standing water on flat roofs or around structures. Repair leaking faucets and air conditioners that produce puddles for several days.
- Change water in bird baths and wading pools at least once a week and keep swimming pools cleaned and sanitized.
- Screen all windows and doors. Repair even the smallest tear or hole.
- Protect yourself by wearing insect repellents and by wearing light colored clothing.

### Q&A CONCERNING MOSQUITO TREATMENT:

- *Is the treatment pet friendly/safe?* We only use products that are approved for use around the home by the Environmental Protection Agency. We recommend children & pets stay out of the treated areas for about 2 hrs. or until the treatment has dried & any food or water should be removed as a precaution per label recommendations.  
\*Fish ponds/Koi/swimming pools - we will not treat in or around ponds containing fish or permanent swimming pools. Plastic kids pools should be emptied or turned over.
- *What if it rains?* Once the material has dried it binds effectively to the vegetation and becomes rain resistant.



## WE HAVE RESPONDED TO:

Name \_\_\_\_\_

Address \_\_\_\_\_

City \_\_\_\_\_

☐ Mosquito breeding on your property \_\_\_\_\_

☐ Mosquito breeding elsewhere in the neighborhood \_\_\_\_\_

☐ During your absence we:

☐ placed mosquito larvicide on your property as requested

☐ investigated or sprayed the \_\_\_\_\_ as requested

Comments: \_\_\_\_\_

Date: \_\_\_\_\_ Time: \_\_\_\_\_

For more information regarding  
Darlington County Mosquito Control visit  
[Smarterpestcontrol.com/Darlington](http://Smarterpestcontrol.com/Darlington) or call 800-922-2596.



## RESIDENTIAL MOSQUITO CONTROL



*Protect your family  
with Smarter pest control™!*

Gregory Pest Solutions offers you a proven monthly mosquito control program that will help protect your family and pets throughout mosquito season. By choosing smarter mosquito control and following our prevention tips, your family can enjoy spending this season outdoors!

### MOSQUITO PREVENTION TIPS:

- Dispose of old tires, buckets, aluminum cans, plastic sheeting, or other containers that can hold water. Empty accumulated water from trash cans, boats, wheel barrows, pet dishes, and flower pot bottoms. If possible, turn these over when they are not in use.
- Clean debris from rain gutters and unclog obstructed downspouts. Remove any standing water on flat roofs or around structures. Repair leaking faucets and air conditioners that produce puddles for several days.
- Change water in bird baths and wading pools at least once a week, and keep swimming pools cleaned and sanitized.
- Screen all windows and doors. Repair even the smallest tear or hole.



Visit [Smarterpestcontrol.com/mosquito](http://Smarterpestcontrol.com/mosquito)  
or call 800-922-2596.

Gregory Pest Solutions also offers other Smarter pest control™ services:

- Premium Pest Control Services
- Bed Bug Heat Remediation
- Termite Services
- Flea Control
- Fire Ant Control
- Wildlife Services

# Where do we treat?



- Towns and Counties
- Golf Courses
- Universities
- Sporting Events
  - Football
  - Softball
  - Tennis
  - Soccer
- Gated Communities
  - HOA
- Residential



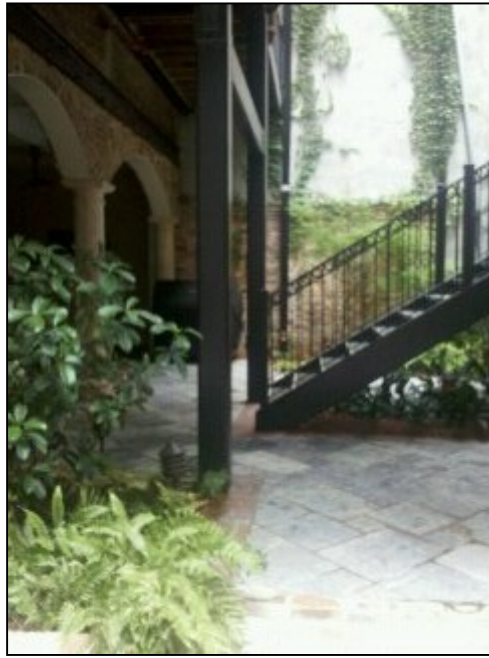
# Barrier Applications



## Applications with Mist Blower

- Do not apply to flowering plants
  - Edible fruits
  - pollinators foraging
- Under Decks
- Vegetation up to 8' high
- Safe for Children and Pets after it dries
- Demand CS and Archer







# Barrier Spray up to 10 feet high

- Chemical trespass
- No spray zones

















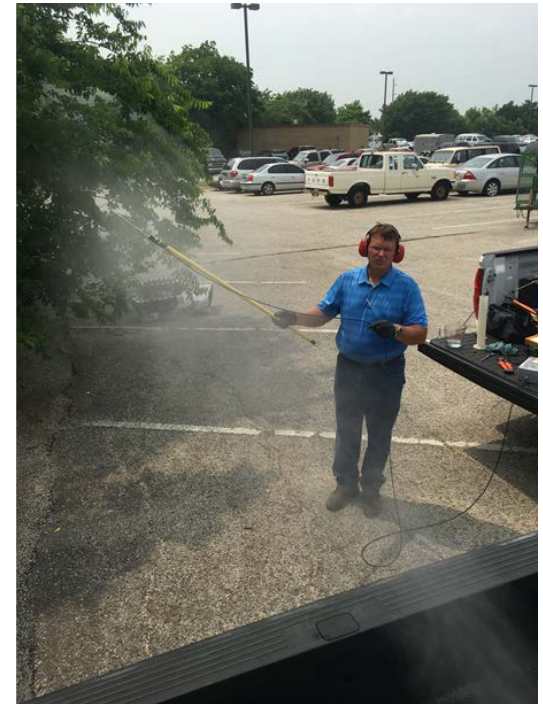
# ULV Applications

- London Fog XKE
- Guardian 95
- Curtis Dyna Fog



# Annual Droplet Certification for ULV equipment

DC – 4 hot  
wire



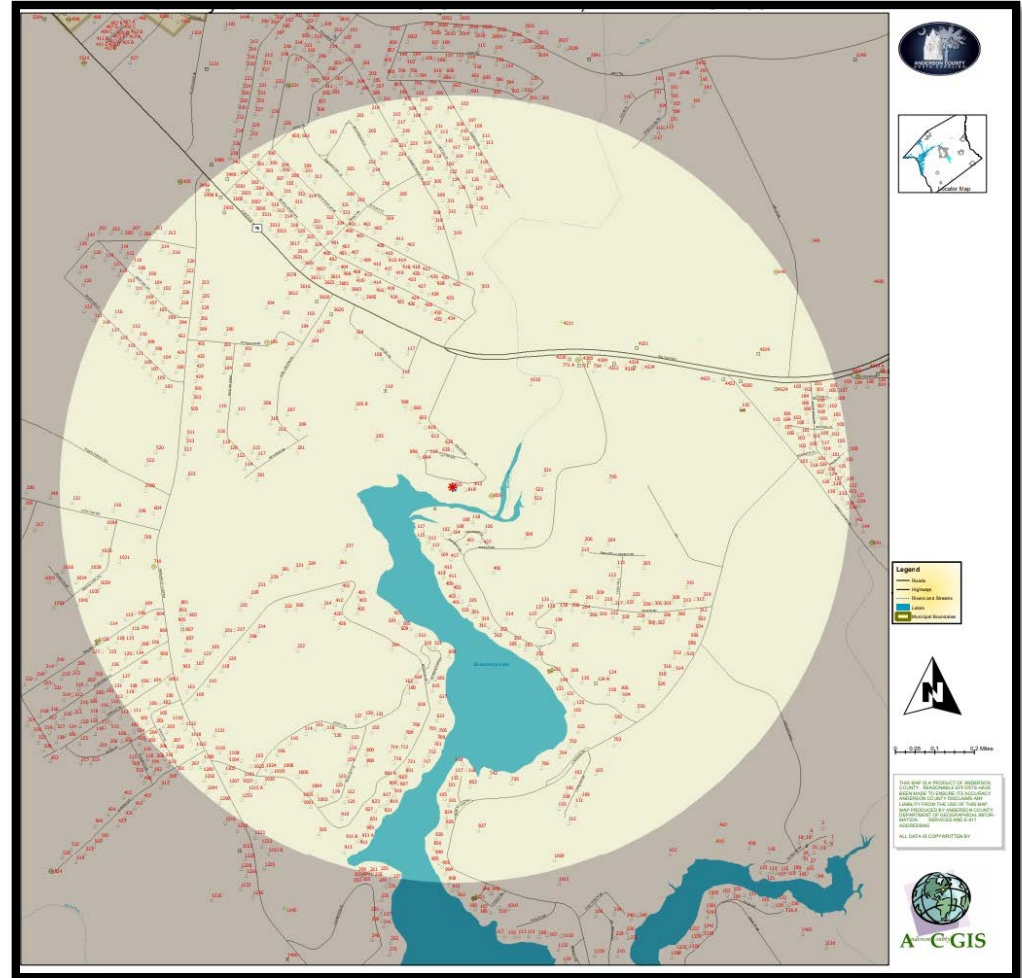
Trey English and Larry Heller with Adapco measuring droplet size from ULV equipment



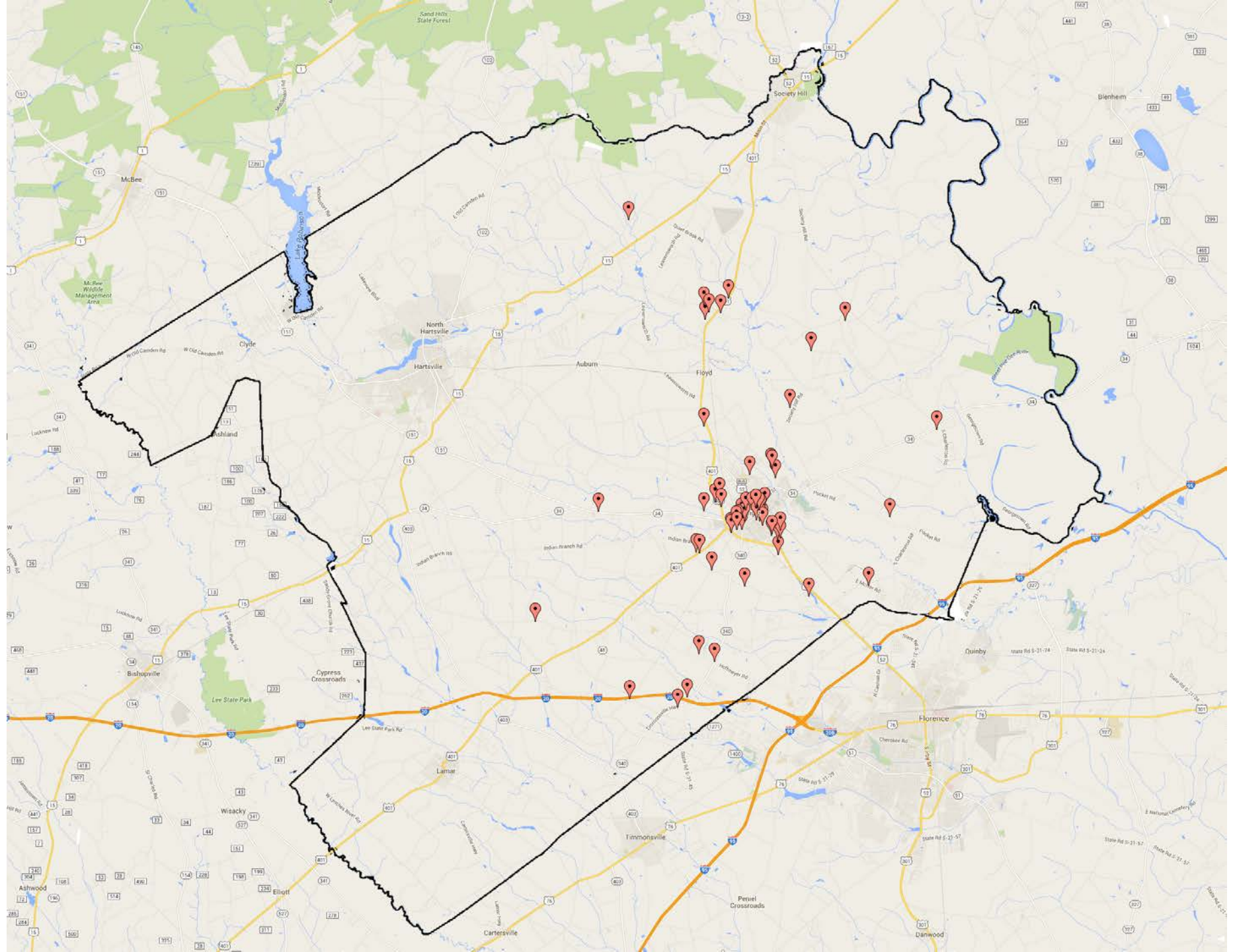
# Treatment Plan for County

- Public Education
  - Flyers – Fee based
  - Media/Social Media - \$0
- Larvicide Initial
  - 180 day tablets
  - Targeted for season long control in high risk areas: churches, schools, daycare centers, senior centers, storm drains, etc.
- Larvicide Maintenance
  - 90 or 45 day tablets
- Citizen Requests
  - Call Center Support
  - Beekeeper notifications
- Adulticide ULV
  - Price per mile
- Emergency Action Plan
  - WNV – 1 mile radius
    - 2 mile radius for multiple cases

# Coordination with GIS







## News from Clemson's Apiculture Program

### 'Tis the Season for Mosquitoes and *Varroa*...

The increasing incidence of West Nile Virus ([click here for WNV information](#)) in SC ([click here for DHEC maps](#)) and recent health issues due to WNV will likely lead to some counties responding with mosquito abatement plans. Successful protection of human health along with pollinators will be increased with good communication and efforts to work together.

SC does not have a mandatory hive registry. As a result, it is imperative that beekeepers sign up for pesticide notifications and know how to close, cover and/or move hives (contact local beekeepers for assistance). Below are links to local mosquito control contacts and Clemson's voluntary Bee Stewardship Program.

<https://www.scdhec.gov/environment/insects/mosquitoes-south-carolina/local-mosquito-control>

Clemson's Hive Mapping/Bee Stewardship Program (see more information in earlier post)

Beekeeper portal: <http://www.kellysolutions.com/clemson/beekeepers/>

\*If you are a member of a local bee club, please let mosquito control know of any social media links your club has so they may post planned treatments and notifications.

Pesticide applicator portal: <http://www.kellysolutions.com/clemson/pesticideapplicationnotifications/>

\***Mosquito control applicators** - please contact your local bee club to find out what social media resources they have so you can post





## PROTECTING PUBLIC HEALTH WITH MOSQUITO PREVENTION & PROTECTION TIPS:



### MOSQUITO PREVENTION:

- Dispose of old tires, buckets, aluminum cans, plastic sheeting, or other refuse that can hold water. Empty accumulated water from trash cans, boats, wheel barrows, pet dishes, and flower pot bottoms. If possible, turn these over when they are not in use.
- Clean debris from rain gutters and unclog obstructed downspouts. Remove any standing water on flat roofs or around structures. Repair leaking faucets and air conditioners that produce puddles for several days.
- Change water in bird baths and wading pools at least once a week and keep swimming pools cleaned and sanitized.
- Screen all windows and doors. Repair even the smallest tear or hole.

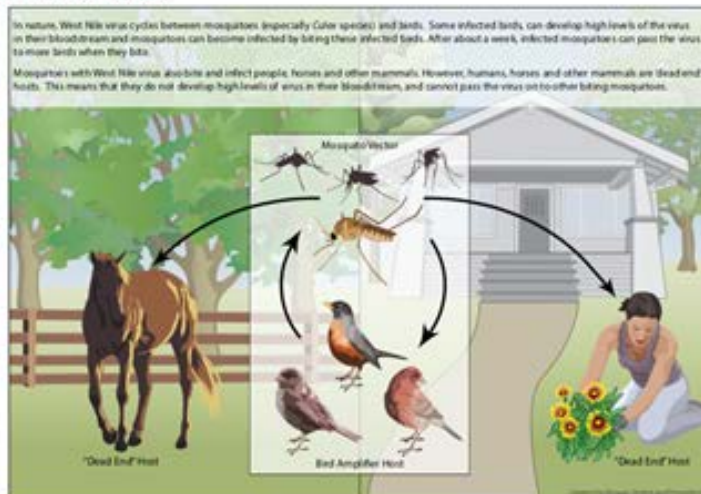
For more information visit <http://www.scdhec.gov/HomeAndEnvironment/Insects/Mosquitoes/EliminateBreedingAreas>

### MOSQUITO BITE PROTECTION:

The National Pest Management Association (NPMA), a nonprofit organization committed to the protection of public health, food, and property from household pests, also recommends the following tips to avoid exposure to mosquitoes.

- Wear long pants, long-sleeved shirts, and closed-toe shoes to protect the skin.
- Protect yourself by wearing insect repellents and by wearing light colored clothing.
- Insect repellent—Wear mosquito repellents that contain DEET, IIR3535, Oil of Lemon, Eucalyptus, or Picaridin.

### WEST NILE TRANSMISSION CYCLE:



Learn more about the West Nile Virus and other mosquito-borne diseases from [CDC.gov](http://CDC.gov), [Mosquito.org](http://Mosquito.org), & [Smarterpestcontrol.com/mosquito](http://Smarterpestcontrol.com/mosquito).

Information  
flyer produced  
by Gregory  
Pest for door  
to door  
emergency  
management  
events

Infographics  
available from  
CDC and  
AMCA

# Innovative or “green” concepts to the market



Ago Ovi-Catch  
Mosquito Trap



In2Care Mosquito  
Trap





DO NOT TOUCH  
NO TOCAR

OVI-CATCH™



AGO  
Mosquito Trap  
Trampa de Mosquitos

CONTAINS NO PESTICIDES  
NO CONTIENE PESTICIDAS

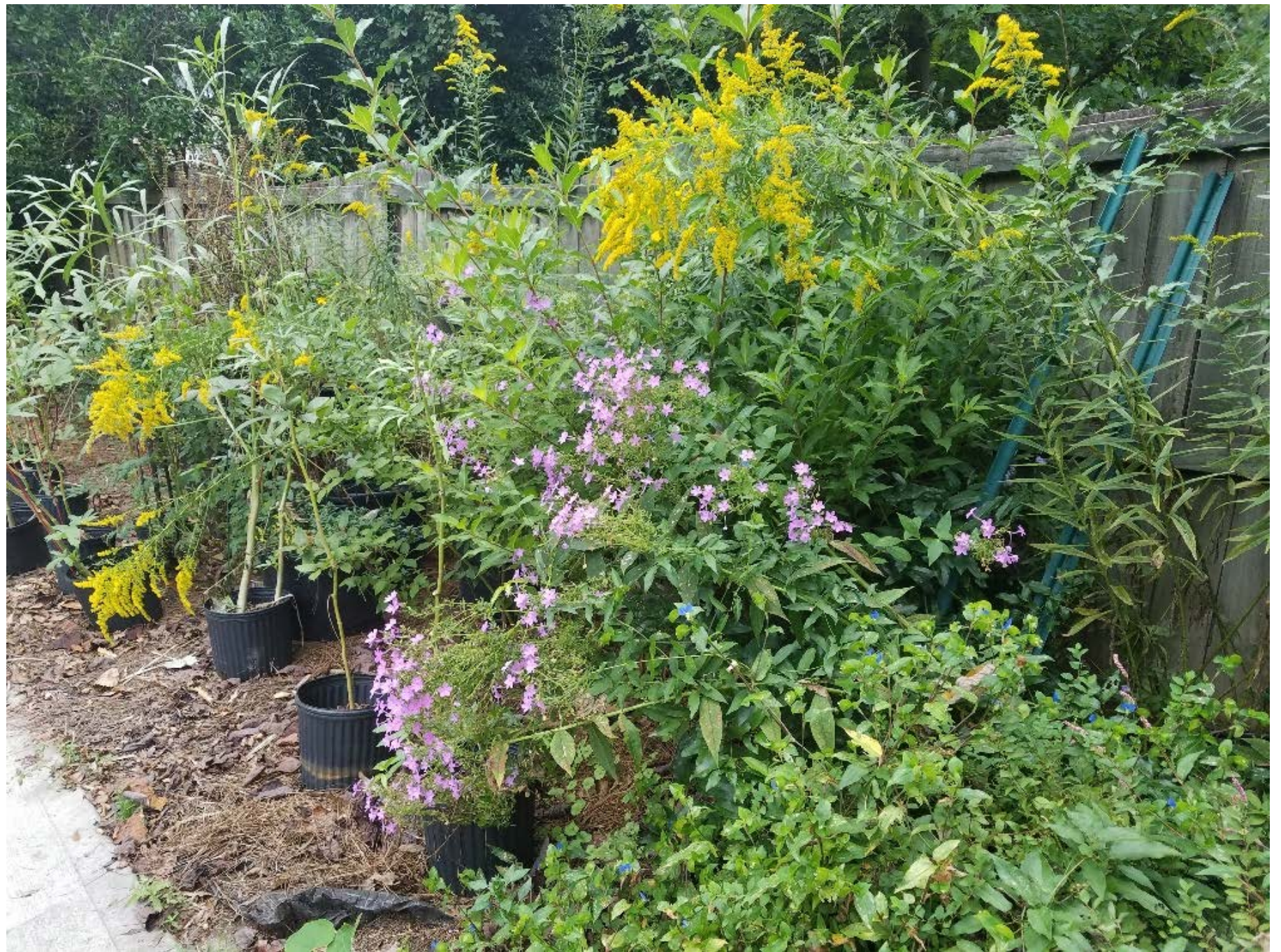


718-495-7840

ENTERPRISE

GREEN TECHNOLOGY













# Superheroes at Gregory Pest for Make-A-Wish<sup>®</sup>

SOUTH CAROLINA



# CONNECT WITH US:



**Gregory®**

PEST SOLUTIONS



@bugologistLarry  
@GregoryPest



@smarterpestcontrol



/smarterpestcontrol

**Smarterpestcontrol.com | 800-922-2596**