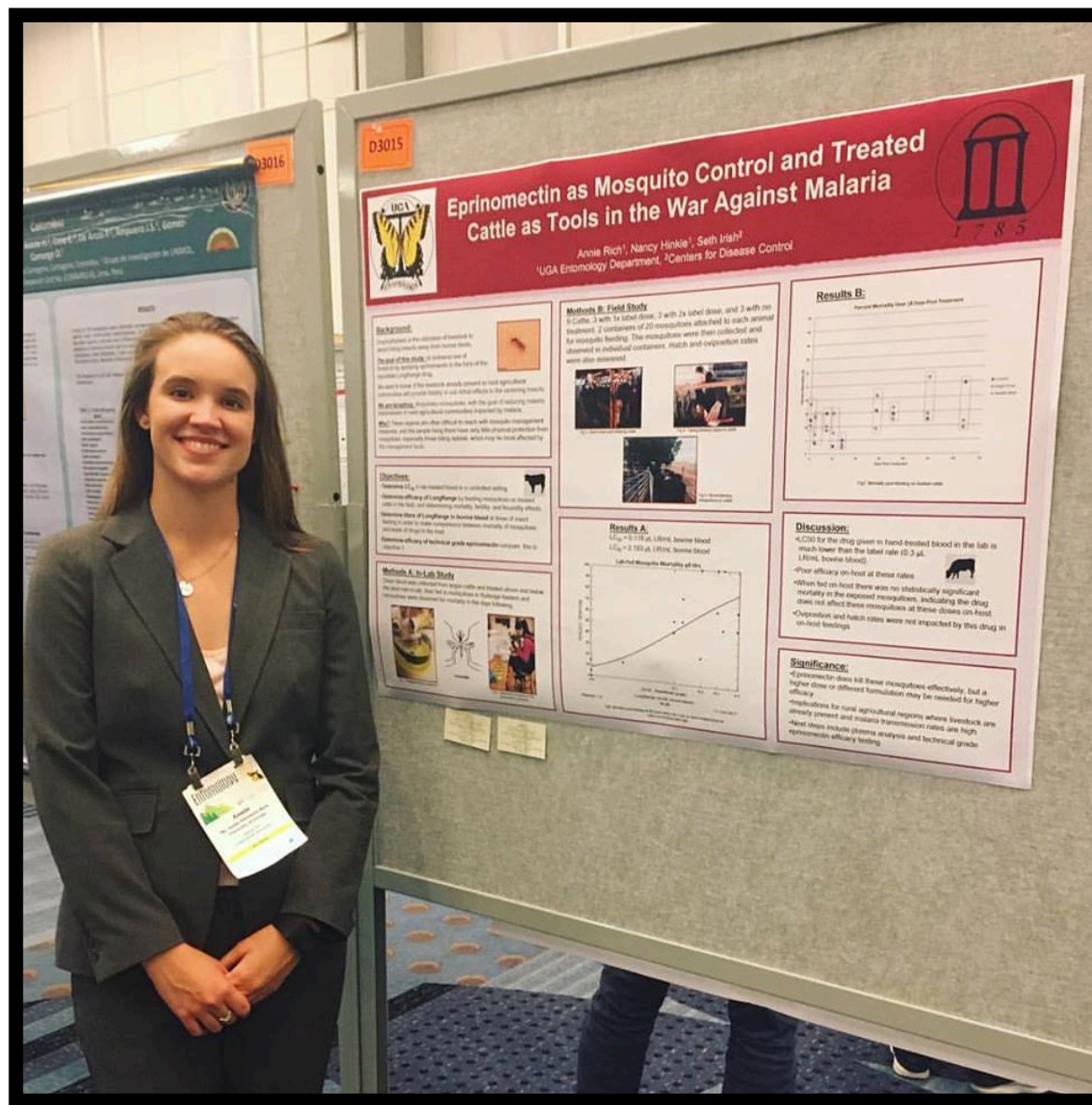


From Academia to the “Real World”

Richmond County Mosquito Control
Annie Rich

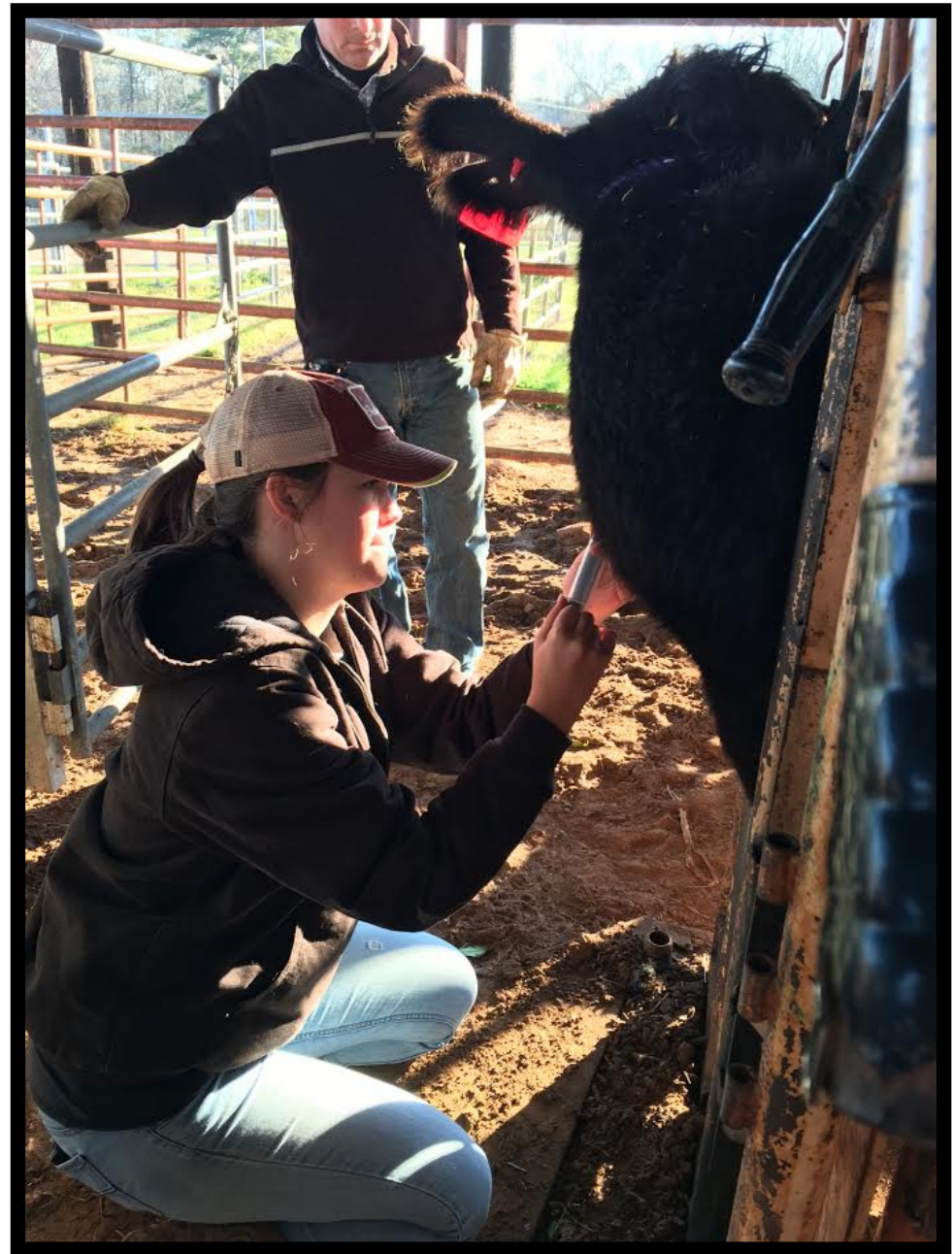


Graduate Student

















Ranked 8th Internationally



**UNIVERSITY OF
GEORGIA**

**College of Agricultural &
Environmental Sciences**

Department of Entomology



Georgia Department of Public Health

East Central Health District



UNIVERSITY OF
GEORGIA

College of Agricultural &
Environmental Sciences

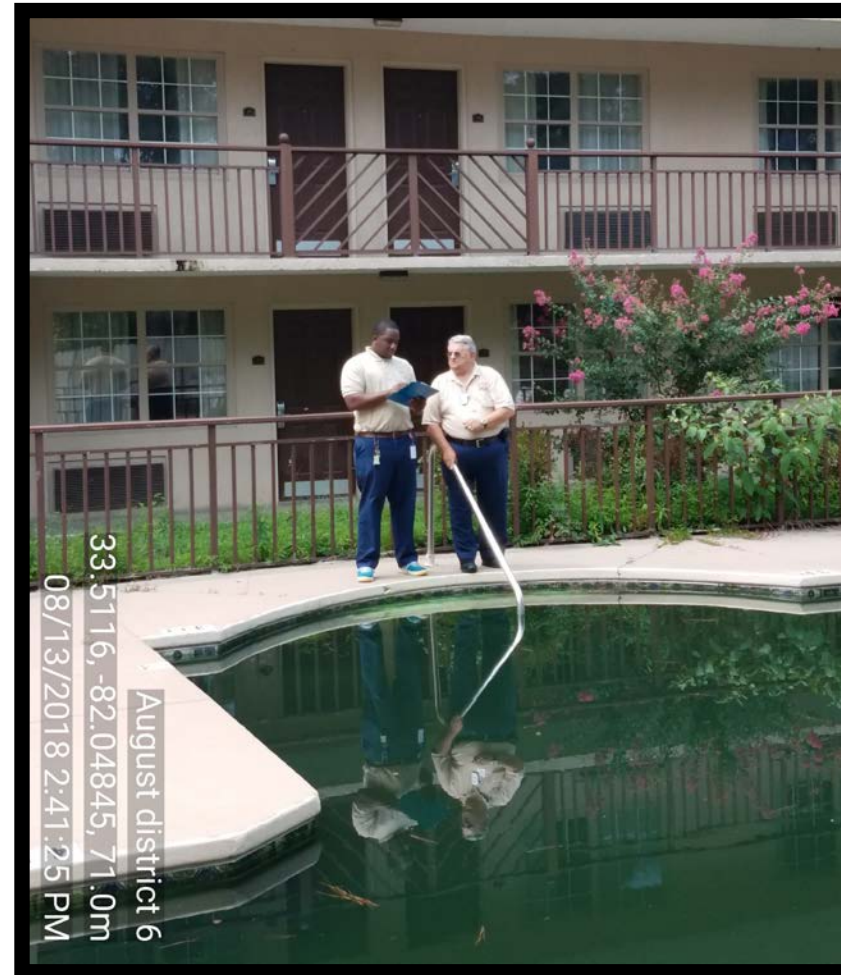
Department of Entomology



Fred Koehle
(Past President)
(Twice)

Richmond County Mosquito Control

- **2 Trucks → 12 Vehicles**
- **2 People → 16 People**
- **Surveillance**
- **Outreach**
- **Education**
- **Inspection**



Master's, New Job, Moving



Surveillance

07/19/2018 9:59:43 AM



33.34182, -81.99579, 19.0m
07/17/2018 11:03:57 AM





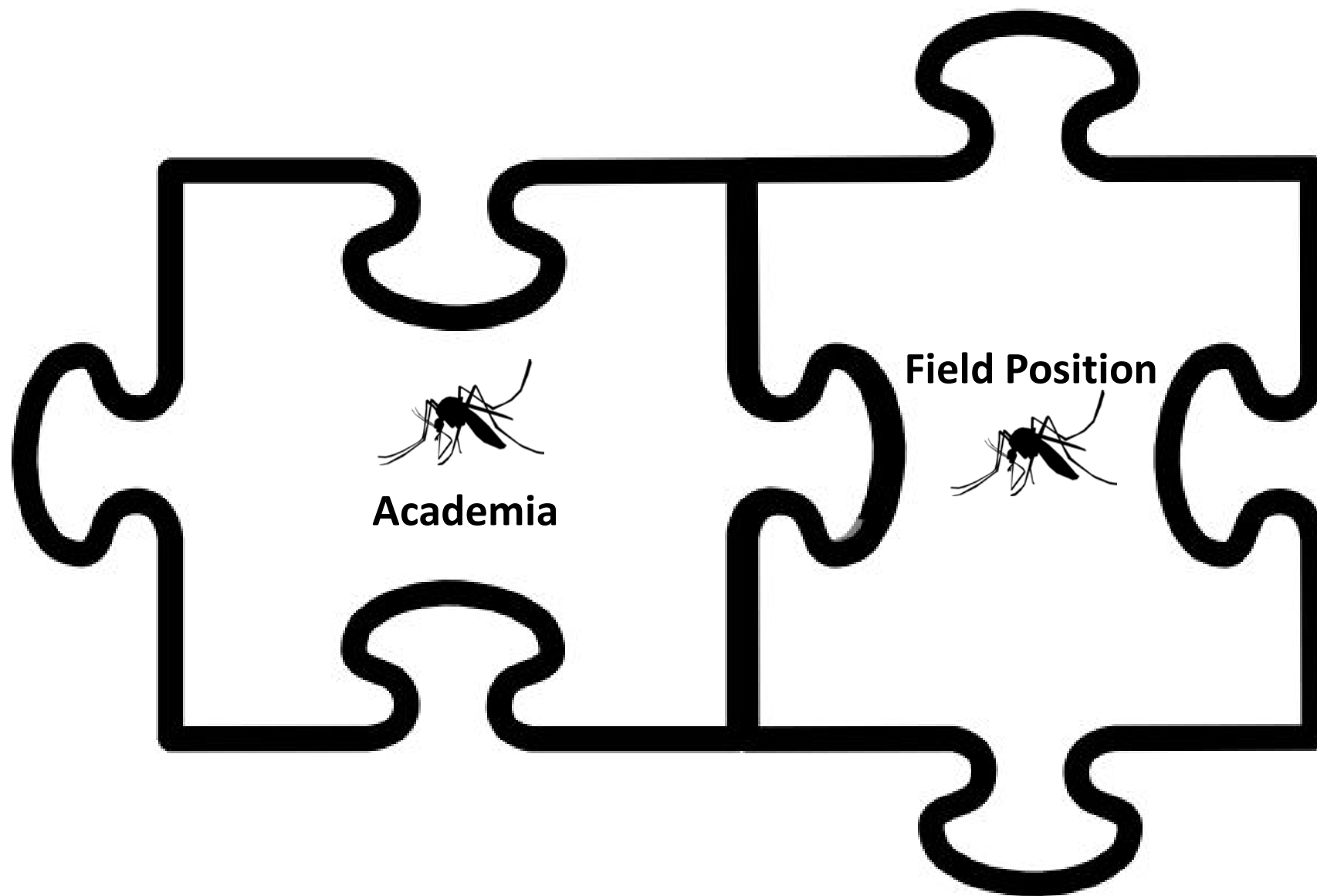












Field Position



Differences

Daily Structure



Academia

- Less predictable
- **More flexible**
- Overall more time consuming
 - "Always on"
- One giant deadline

8-5 Job

- **Less flexible**
- Easier to time-manage
- Option to leave work at work
- Multiple smaller deadlines

Learning



Academia

- Structured learning
- Constant influx of information
- Pressure-on
- Expectations & opportunity for continued learning

8-5 Job

- Responsible for own continued learning
- Build your own structure

Workplace/Public dynamics

Academia

- Other scientists
- Science technicians
- Solo-work
- Building own research
- Students



8-5

- Mixture of specialties
- Lone-entomologist
- Collaboration-based
- General Public

Similarities

Research



- Record Keeping
- Data entry
- Data analysis
- Field work
- Mosquito rearing
- Lab work



Speaking



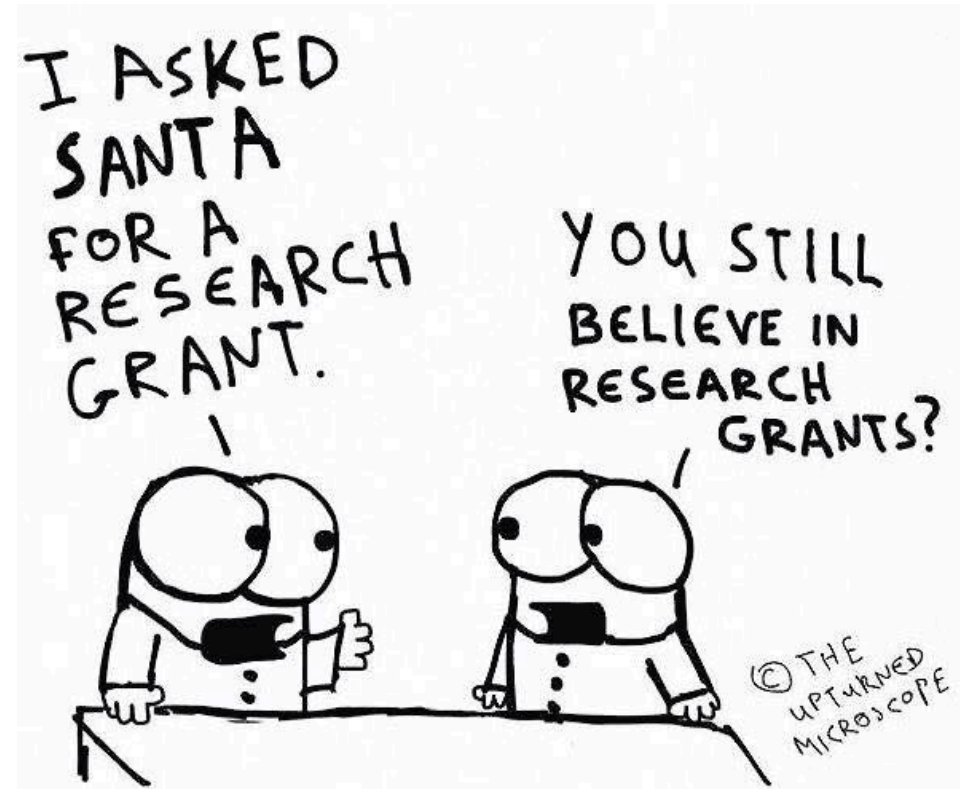
Networking

- Builds network of knowledge you can pull from
- More opportunity in school
- Benefits you in the real-world
- Business cards



Funding/Budget

- Grants and proposals
- Limited budgets
- Collaboration necessary
- Government funding may be pulled



Collaboration



- Patience
- Networking
- Chain-of-command

Connection

Connection between academia and
applied work... is lacking

Who innovates?

Who are **innovations** for?

Who puts them to use?

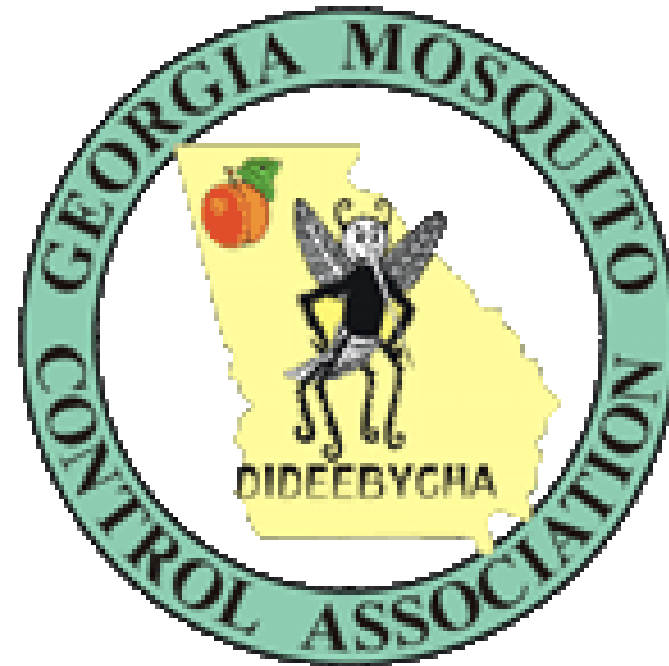
Communication

Collaboration

Team Mentality
(Georgia Mosquito Control
Association)

Summary

We are all the future of mosquito control and research





Questions & Discussion

The Public



Academia

- Majority of public interactions with other students, professors, professionals

8-5 Job

- Majority of public interactions with non-student, non-entomology, non-science citizens

Organization and Prioritizing

- Master's – Follow the map
- Applied position – Make a map

