

THERMACELL®

Industry Spotlight

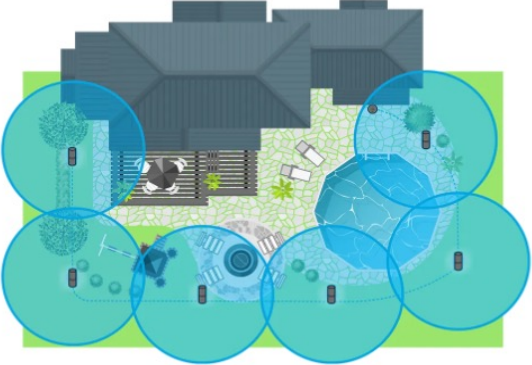
Presented by: Dr. Ben McMillan, Sr. Biologist

Georgia Mosquito Control Association,
46th Annual Meeting. Jekyll Island, GA

Presentation Outline:

- Introduction to products
 - Strengths of each option
- Worldwide availability
- Rigorous scientific review
- Summary

Thermacell is the Gold Standard for Area Repellents



20ft per repeller
6 repeller system covers 1890 ft²

	Mat & Fuel	Electric	Installed
Zone Size (ft ²)	177	314	1890
Energy Source	Butane	Battery	Hard-wired
Energy Run Time	12 hrs	5-9 hrs	Infinite
A.I. Run Time	4hrs/mat	40 hrs	180 hrs

Mat & Fuel

3 easy steps

1. Insert butane
2. Insert mat
3. Push start



Electric

2 easy steps

1. Insert refill
2. Push start

3
Heat draws
repellent
upwards

2
Rechargeable
Li-ion battery
powers
heater

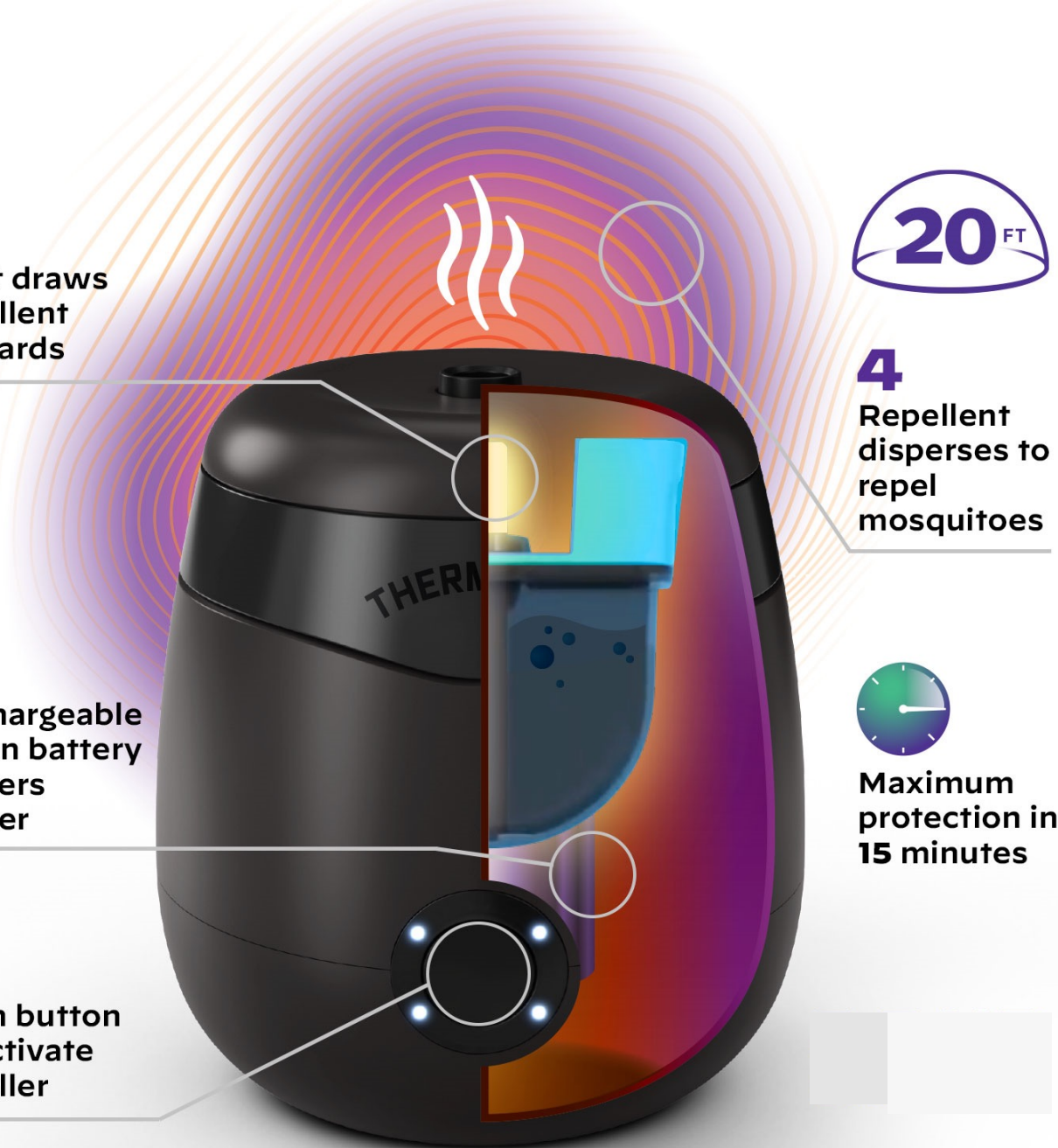
1
Push button
to activate
repeller

20^{FT}

4
Repellent
disperses to
repel
mosquitoes



Maximum
protection in
15 minutes



LIV

2 easy steps

1. Insert refill
2. Push start

2
Heat draws
repellent
upwards

1
Internal
heating element
is powered by
low voltage
electrical
power source

3
Repellent
disperses to
form zone
keeping away
mosquitoes

20^{FT}

Each repeller
creates a
20^{FT} zone



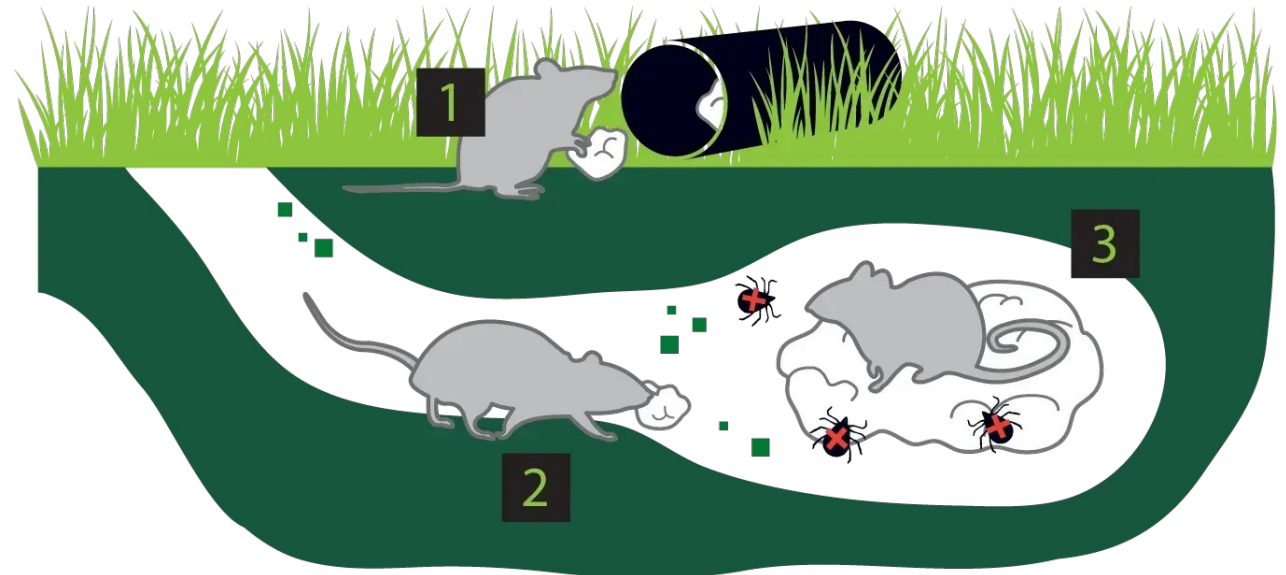
Tick Tubes

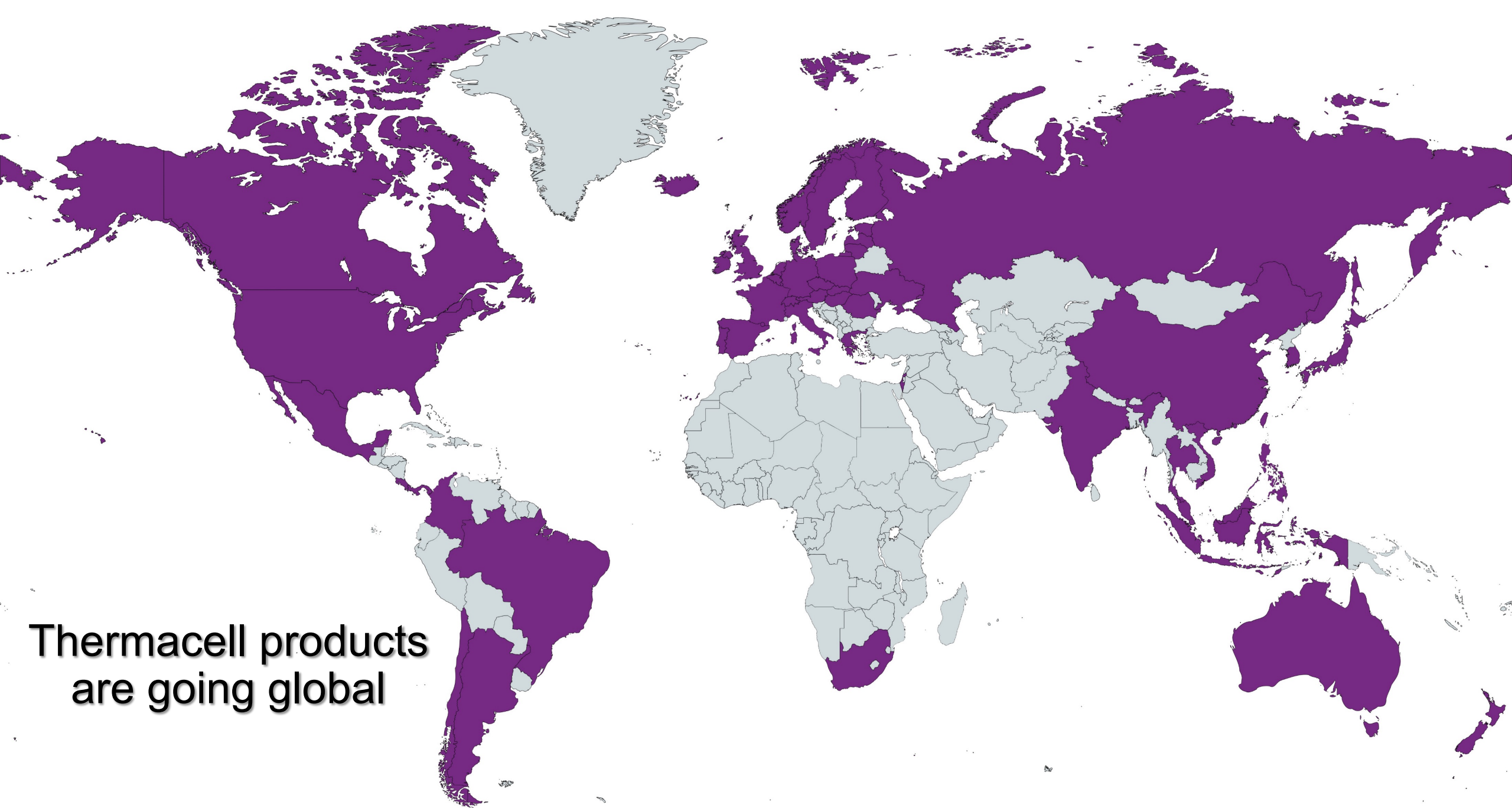
1 easy step

1. Place tubes in deer tick infested areas

Active Ingredient: 7.4% Permethrin

Apply 2x year





Thermacell products
are going global

Efficacy tested in many environments



Summary

- Another layer of protection
- Easy to use, long-lasting, and effective
- Validated by 20 years of research and >100k consumer ratings



Questions?

THERMACELL®

Ben McMillan, PhD

Senior Biologist

Benjamin.mcmillan@thermacell.net

+1.703.728.5703

